



KINGDOM OF CAMBODIA
NATION RELIGION KING



TOURISM STATISTICAL REPORT

APRIL 2008

MINISTRY OF TOURISM

Statistics and Tourism Information Department
#3, Preah Monivong Blvd., Phnom Penh 12258, Kingdom of Cambodia.
Tel.: +855 23 211593 / Fax: +855 23 212837
Email: info@mot.gov.kh
Website: www.mot.gov.kh

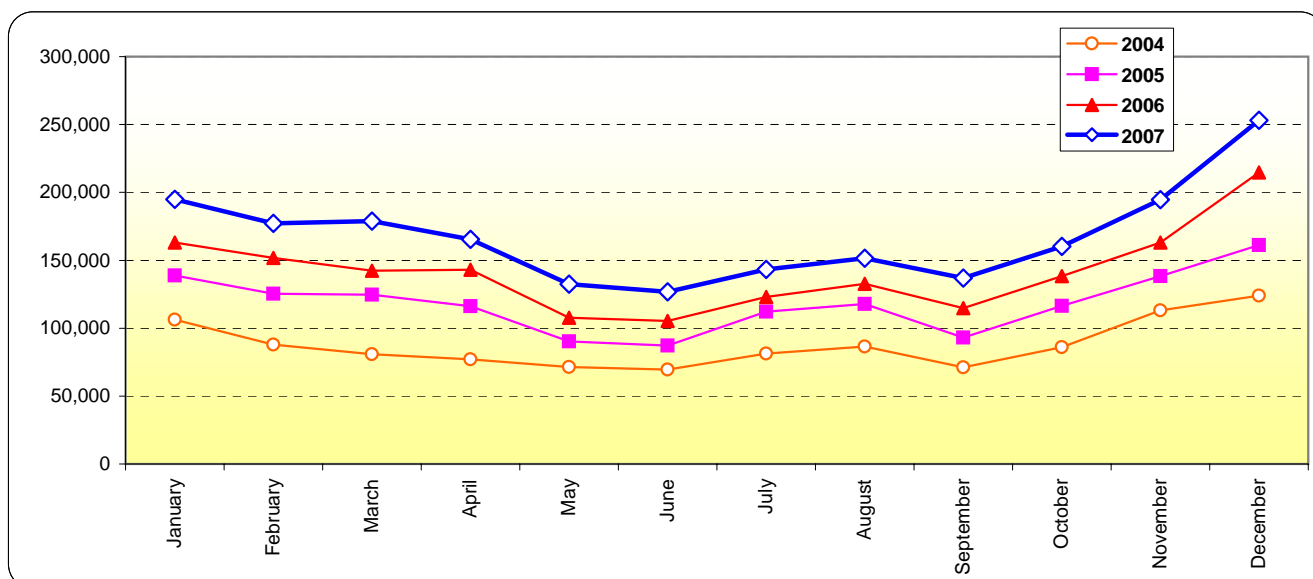
Tourism Highlights

Visitor Arrivals, Average Length of Stay, Hotels Occupancy and Tourism Receipts 1993 - 2007

Years	Visitor Arrivals		Average Length of Stay (days)	Hotels Occupancy (%)	Tourism Receipts (million US\$)
	number	change (%)			
1993	118,183	0.00	N/A	N/A	N/A
1994	176,617	49.44%	N/A	N/A	N/A
1995	219,680	24.38%	8.00	37.00	100
1996	260,489	18.58%	7.50	40.00	118
1997	218,843	-15.99%	6.40	30.00	103
1998	289,524	32.30%	5.20	40.00	166
1999	367,743	27.02%	5.50	44.00	190
2000	466,365	26.82%	5.50	45.00	228
2001	604,919	29.71%	5.50	48.00	304
2002	786,524	30.02%	5.80	50.00	379
2003	701,014	-10.87%	5.50	50.00	347
2004	1,055,202	50.53%	6.30	52.00	578
2005	1,421,615	34.72%	6.30	52.00	832
2006	1,700,041	19.59%	6.50	54.79	1,049
2007	2,015,128	18.53%	6.50	54.79	1,400

International visitor arrivals to Cambodia

Destination	Months	2004	2005	2006	2007	2008	change(%) 2008*/07
Cambodia	January	106,200	138,718	163,047	194,932	223,581	14.70%
<i>(all means of transportation, include same-day visitors)</i>	February	87,795	125,326	151,821	177,130	214,902	21.32%
	March	80,765	124,626	142,437	178,751	205,722	15.09%
	April	77,105	116,219	143,069	165,347	173,903	5.17%
	May	71,486	90,314	107,720	132,512		
	June	69,595	87,228	105,298	126,677		
	July	81,223	112,116	123,047	143,310		
	August	86,450	117,943	132,792	151,478		
	September	71,209	93,158	114,781	137,027		
	October	86,121	116,382	138,296	160,235		
	November	113,195	138,293	163,068	194,646		
	December	124,058	161,292	214,665	253,083		
	Total	1,055,202	1,421,615	1,700,041	2,015,128	818,108	14.24%



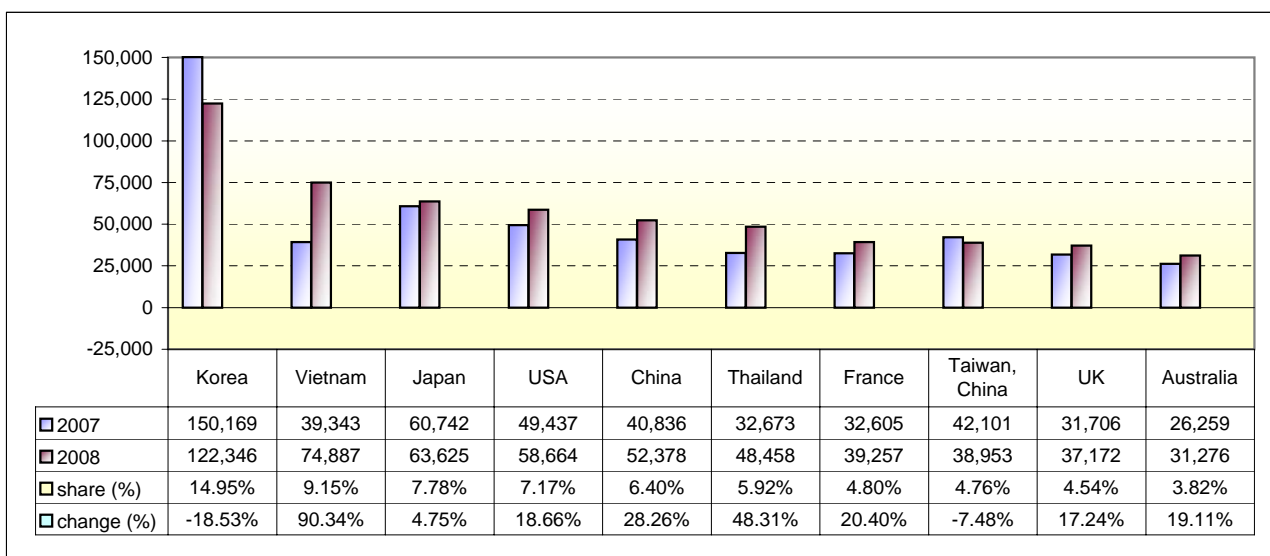
Executive Summary from January - April in 2008

I. Visitor arrivals to Cambodia from Jan - Apr was: **818,108**

II Mode of arrivals

	visitors	share (%)
- Air	503,328	61.52
Phnom Penh Int'l Airport	211,524	25.86
Siem Reap Int'l Airport	291,804	35.67
- Land and Water ways	282,216	34.50
Land	251,609	30.75
Boat	30,607	3.74
- Same-day visitors	32,564	3.98
Total	818,108	100.00

III. Top ten markets arrivals to Cambodia from Jan - Apr in 2008



IV. Visitor arrivals to Cambodia from Jan - Apr 2007 - 2008

Visitor arrivals			share (%)		change (%)
	2007	2008	2007	2008*	2008*/07
Air	473,707	503,328	66.15	61.52	6.25
Phnom Penh Int'l Airport	178,503	211,524	24.93	25.86	18.50
Siem Reap Int'l Airport	295,204	291,804	41.22	35.67	-1.15
Land and Water ways	210,275	282,216	29.36	34.50	34.21
Land	192,492	251,609	26.88	30.75	30.71
Boat	17,783	30,607	2.48	3.74	72.11
Sub-Total	683,982	785,544	95.51	96.02	14.85
Same-day visitors	32,178	32,564	4.49	3.98	1.20
Total	716,160	818,108	100.00	100.00	14.2

V. Remark: Percentage share of visitor arrivals at destination from Jan - Apr 2008

Visitor arrivals			share (%)		change (%)
	2007	2008	2007	2008*	2008*/07
Phnom Penh & Other Destinations	230,579	370,613	32.20%	45.30%	60.73%
Siem Reap Province	485,581	447,495	67.80%	54.70%	-7.84%
Total	716,160	818,108	100.00%	100.00%	14.2%

Visitor Arrivals to Cambodia by Country of Residence from January - April in 2008

(by all means of transportation)

Regions Country of Residence	2007		2008			share		change	
			Purpose of Visit			Total	Females	(%)	(%)
			Holiday	Business	Others			2008*	2008*/07
GRAND TOTAL	716,160	716,186	56,906	12,452	818,108	364,691	100.00%	14.24%	
Asia and the Pacific	458,714	457,568	47,786	6,844	512,198	236,674	62.61%	11.66%	
ASEAN	126,069	163,095	21,871	3,696	188,662	85,735	23.06%	49.65%	
Brunei Darussalam	152	116	4	22	142	58	0.02%	-6.58%	
Indonesia	2,474	1,868	1,205	136	3,209	1,183	0.39%	29.71%	
Laos	5,015	12,504	44	156	12,704	8,150	1.55%	153.32%	
Malaysia	25,853	23,867	1,670	82	25,619	8,882	3.13%	-0.91%	
Myanmar	630	566	144	60	770	336	0.09%	22.22%	
Philippines	9,189	9,600	1,622	367	11,589	6,789	1.42%	26.12%	
Singapore	10,740	10,570	643	71	11,284	3,952	1.38%	5.07%	
Thailand	32,673	42,197	5,363	898	48,458	19,800	5.92%	48.31%	
Vietnam	39,343	61,807	11,176	1,904	74,887	36,585	9.15%	90.34%	
Eastern Asia	294,860	253,541	22,846	1,975	278,362	133,172	34.03%	-5.60%	
China	40,836	39,254	12,690	434	52,378	23,275	6.40%	28.26%	
Hong Kong, China	961	884	140	0	1,024	375	0.13%	6.56%	
Japan	60,742	60,882	1,812	931	63,625	31,249	7.78%	4.75%	
Mongolia	51	28	2	6	36	26	0.00%	-29.41%	
South Korea	150,169	116,521	5,245	580	122,346	59,552	14.95%	-18.53%	
Taiwan, China	42,101	35,972	2,957	24	38,953	18,695	4.76%	-7.48%	
Southern Asia	4,225	3,632	1,095	323	5,050	1,261	0.62%	19.53%	
Afghanistan	14	6	0	13	19	4	0.00%	35.71%	
Bangladesh	256	98	67	28	193	35	0.02%	-24.61%	
India	3,374	3,083	859	176	4,118	1,036	0.50%	22.05%	
Nepal	202	201	52	36	289	85	0.04%	43.07%	
Pakistan	160	111	36	43	190	20	0.02%	18.75%	
Srilanka	219	133	81	27	241	81	0.03%	10.05%	
Oceania	30,291	33,256	1,910	802	35,968	16,042	4.40%	18.74%	
Australia	26,259	28,930	1,656	690	31,276	14,066	3.82%	19.11%	
New Zealand	4,032	4,326	254	112	4,692	1,976	0.57%	16.37%	
Others Asia & the Pacific	3,269	4,044	64	48	4,156	464	0.51%	27.13%	
Europe	153,712	177,264	5,873	3,445	186,582	75,278	22.81%	21.38%	
Northern Europe	53,620	60,103	2,258	1,028	63,389	24,135	7.75%	18.22%	
Denmark	3,741	3,972	98	93	4,163	1,660	0.51%	11.28%	
Finland	2,604	2,996	115	73	3,184	1,127	0.39%	22.27%	
Iceland	119	129	1	0	130	43	0.02%	9.24%	
Ireland	2,942	3,482	102	54	3,638	1,446	0.44%	23.66%	
Norway	2,967	3,800	95	36	3,931	1,515	0.48%	32.49%	
Sweden	9,541	10,806	211	154	11,171	4,783	1.37%	17.08%	
United Kingdom	31,706	34,918	1,636	618	37,172	13,561	4.54%	17.24%	
Western Europe	75,751	85,214	2,977	1,943	90,134	37,952	11.02%	18.99%	
Austria	3,242	3,519	30	23	3,572	1,490	0.44%	10.18%	
Belgium	4,296	4,573	173	159	4,905	1,983	0.60%	14.18%	
France	32,605	36,361	1,840	1,056	39,257	17,157	4.80%	20.40%	
Germany	22,883	27,205	482	419	28,106	11,448	3.44%	22.82%	
Luxembourg	137	208	2	7	217	85	0.03%	58.39%	
Netherlands	7,193	7,221	269	172	7,662	3,150	0.94%	6.52%	
Switzerland	5,395	6,127	181	107	6,415	2,639	0.78%	18.91%	
Eastern Europe	8,769	13,186	269	134	13,589	6,388	1.66%	54.97%	
Bulgaria	115	129	3	4	136	63	0.02%	18.26%	
Czech	865	1,032	14	26	1,072	442	0.13%	23.93%	
Hungary	1,230	1,285	34	19	1,338	606	0.16%	8.78%	
Poland	1,594	2,440	17	18	2,475	1,199	0.30%	55.27%	
Romania	150	167	9	6	182	105	0.02%	21.33%	
Russia	3,994	7,184	152	44	7,380	3,529	0.90%	84.78%	
Slovakia	166	256	9	14	279	122	0.03%	68.07%	
Ukraine	655	693	31	3	727	322	0.09%	10.99%	
Southern Europe	12,474	14,755	314	302	15,371	6,380	1.88%	23.22%	
Croatia	84	175	2	8	185	87	0.02%	120.24%	
Greece	481	528	10	8	546	207	0.07%	13.51%	
Italy	6,924	8,573	128	112	8,813	3,448	1.08%	27.28%	
Portugal	655	683	29	13	725	367	0.09%	10.69%	
Slovenia	248	362	3	3	368	162	0.04%	48.39%	
Spain	3,416	3,717	98	98	3,913	1,817	0.48%	14.55%	
Turkey	666	717	44	60	821	292	0.10%	23.27%	
Others Europe	3,098	4,006	55	38	4,099	423	0.50%	32.31%	

Visitor Arrivals to Cambodia by Country of Residence from January - April in 2008

(by all means of transportation)

Regions Country of Residence	2007		2008			share		change	
			Purpose of Visit			Total	Females	2008*	2008*/07
			Holiday	Business	Others				
GRAND TOTAL	716,160	716,186	56,906	12,452	818,108	364,691	100.00%	14.24%	
Americas	67,161	77,330	3,046	2,096	82,472	34,953	10.08%	22.80%	
Argentina	408	706	22	10	738	311	0.09%	80.88%	
Brazil	482	686	9	28	723	345	0.09%	50.00%	
Canada	13,709	15,463	555	330	16,348	7,302	2.00%	19.25%	
Chile	414	748	12	12	772	399	0.09%	86.47%	
Colombia	180	177	1	19	197	84	0.02%	9.44%	
Mexico	1,085	1,102	15	8	1,125	529	0.14%	3.69%	
Peru	101	95	0	8	103	59	0.01%	1.98%	
United States	49,437	54,620	2,391	1,653	58,664	25,562	7.17%	18.66%	
Uruguay	106	15	1	0	16	7	0.00%	-84.91%	
Others Americas	1,239	3,718	40	28	3,786	355	0.46%	205.57%	
Africa	1,218	1,008	146	28	1,182	381	0.14%	-2.96%	
Cameroon	59	33	4	2	39	2	0.00%	-33.90%	
Ghana	94	29	4	1	34	5	0.00%	-63.83%	
Nigeria	220	198	74	5	277	23	0.03%	25.91%	
Sudan	4	1	2	2	5	1	0.00%	25.00%	
South Africa	585	666	55	6	727	314	0.09%	24.27%	
Others Africa	256	81	7	12	100	36	0.01%	-60.94%	
Middle East	3,177	3,016	55	39	3,110	1,246	0.38%	-2.11%	
Egypt	37	35	0	3	38	15	0.00%	2.70%	
Iran	146	71	4	1	76	22	0.01%	-47.95%	
Israel	2,657	2,727	48	24	2,799	1,186	0.34%	5.34%	
Kuwait	82	97	0	2	99	0	0.01%	20.73%	
Palestine					0		0.00%		
Saudi Arabia	8	17	0	0	17	0	0.00%	112.50%	
United Arab Emirates					0		0.00%		
Others Middle East	247	69	3	9	81	23	0.01%	-67.21%	
Same-day visitors	32,178				32,564	16,159	3.98%	1.20%	

Remark:

- Cambodian Overseas: 31,623
- Cambodian Residence:: 796,851

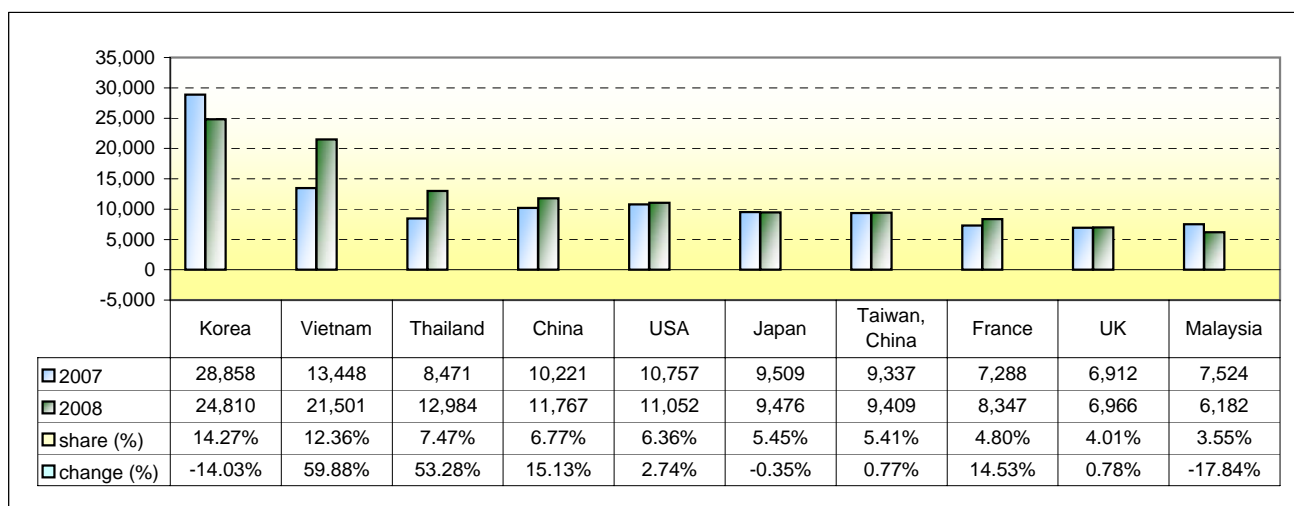
Executive Summary in April 2008

I. Visitor arrivals to Cambodia in April was: **173,903**

II. Mode of arrivals

	visitors	share (%)
- Air	101,305	58.25
Phnom Penh Int'l Airport	47,358	27.23
Siem Reap Int'l Airport	53,947	31.02
- Land and Water ways	61,246	35.22
Land	57,871	33.28
Boat	3,375	1.94
- Same-day visitors	11,352	6.53
Total	173,903	100.00

III. Top ten markets arrivals to Cambodia in April 2008



IV. Visitor arrivals to Cambodia in April 2007 - 2008

Visitor arrivals			share (%)		change (%)
	2007	2008	2007	2008*	2008*/07
Air	100,113	101,305	60.55	58.25	1.19
Phnom Penh Int'l Airport	42,153	47,358	25.49	27.23	12.35
Siem Reap Int'l Airport	57,960	53,947	35.05	31.02	-6.92
Land and Water ways	47,580	61,246	28.78	35.22	28.72
Land	44,469	57,871	26.89	33.28	30.14
Boat	3,111	3,375	1.88	1.94	8.49
Sub-Total	147,693	162,551	89.32	93.47	10.06
Same-day visitors	17,654	11,352	10.68	6.53	-35.70
Total	165,347	173,903	100.00	100.00	5.17

V. Remark: Percentage share of visitor arrivals at destination in April 2008

Visitor arrivals			share (%)		change (%)
	2007	2008	2007	2008*	2008*/07
Phnom Penh & Other Destinations	79,578	82,798	48.13%	47.61%	4.05%
Siem Reap Province	85,769	91,105	51.87%	52.39%	6.22%
Total	165,347	173,903	100.00%	100.00%	5.17%

Visitor Arrivals to Cambodia by Country of Residence in April 2008

(by all means of transportation)

Regions Country of Residence	2007		2008				share	change	
			Purpose of Visit			Total	Females	(%)	(%)
			Holiday	Business	Others			2008*	2008*/07
GRAND TOTAL	165,347	143,977	15,196	3,378	173,903	75,870	100.00%	5.17%	
Asia and the Pacific	103,259	100,580	12,932	1,812	115,324	51,464	66.32%	11.68%	
ASEAN	36,634	43,747	5,856	888	50,491	22,380	29.03%	37.83%	
Brunei Darussalam	54	58	4	3	65	30	0.04%	20.37%	
Indonesia	665	474	334	46	854	307	0.49%	28.42%	
Laos	1,087	2,474	14	14	2,502	1,620	1.44%	130.17%	
Malaysia	7,524	5,669	486	27	6,182	1,965	3.55%	-17.84%	
Myanmar	183	183	43	23	249	108	0.14%	36.07%	
Philippines	2,435	2,937	467	123	3,527	2,088	2.03%	44.85%	
Singapore	2,767	2,427	177	23	2,627	890	1.51%	-5.06%	
Thailand	8,471	11,252	1,548	184	12,984	5,048	7.47%	53.28%	
Vietnam	13,448	18,273	2,783	445	21,501	10,324	12.36%	59.88%	
Eastern Asia	58,169	48,918	6,230	593	55,741	25,627	32.05%	-4.17%	
China	10,221	8,195	3,406	166	11,767	4,991	6.77%	15.13%	
Hong Kong, China	229	228	44	0	272	109	0.16%	18.78%	
Japan	9,509	8,839	407	230	9,476	4,336	5.45%	-0.35%	
Mongolia	15	6	0	1	7	4	0.00%	-53.33%	
South Korea	28,858	23,088	1,534	188	24,810	11,829	14.27%	-14.03%	
Taiwan, China	9,337	8,562	839	8	9,409	4,358	5.41%	0.77%	
Southern Asia	1,102	1,007	303	70	1,380	352	0.79%	25.23%	
Afghanistan	6	0	0	0	0	0	0.00%	-100.00%	
Bangladesh	110	29	19	9	57	13	0.03%	-48.18%	
India	828	835	234	46	1,115	294	0.64%	34.66%	
Nepal	56	63	13	3	79	19	0.05%	41.07%	
Pakistan	47	44	12	8	64	7	0.04%	36.17%	
Sri Lanka	55	36	25	4	65	19	0.04%	18.18%	
Oceania	6,827	6,410	519	250	7,179	3,002	4.13%	5.16%	
Australia	5,878	5,544	442	209	6,195	2,636	3.56%	5.39%	
New Zealand	949	866	77	41	984	366	0.57%	3.69%	
Others Asia & the Pacific	527	498	24	11	533	103	0.31%	1.14%	
Europe	29,379	29,367	1,479	990	31,836	12,498	18.31%	8.36%	
Northern Europe	10,521	9,578	576	283	10,437	3,784	6.00%	-0.80%	
Denmark	618	559	22	19	600	230	0.35%	-2.91%	
Finland	278	383	20	23	426	138	0.24%	53.24%	
Iceland	25	18	0	0	18	7	0.01%	-28.00%	
Ireland	736	764	23	20	807	301	0.46%	9.65%	
Norway	526	416	19	10	445	142	0.26%	-15.40%	
Sweden	1,426	1,103	44	28	1,175	468	0.68%	-17.60%	
United Kingdom	6,912	6,335	448	183	6,966	2,498	4.01%	0.78%	
Western Europe	14,678	14,375	771	594	15,740	6,414	9.05%	7.24%	
Austria	437	400	7	7	414	175	0.24%	-5.26%	
Belgium	898	726	43	47	816	320	0.47%	-9.13%	
France	7,288	7,494	509	344	8,347	3,606	4.80%	14.53%	
Germany	3,741	3,610	117	114	3,841	1,433	2.21%	2.67%	
Netherlands	1,163	1,191	59	53	1,303	500	0.75%	12.04%	
Luxembourg	41	52	0	2	54	21	0.03%	31.71%	
Switzerland	1,110	902	36	27	965	359	0.55%	-13.06%	
Eastern Europe	1,413	2,229	44	37	2,310	1,079	1.33%	63.48%	
Bulgaria	15	31	1	3	35	13	0.02%	133.33%	
Czech	178	208	0	1	209	103	0.12%	17.42%	
Hungary	96	77	9	8	94	38	0.05%	-2.08%	
Poland	244	359	0	5	364	165	0.21%	49.18%	
Romania	31	27	1	5	33	14	0.02%	6.45%	
Russia	694	1,310	24	10	1,344	647	0.77%	93.66%	
Slovakia	38	74	2	3	79	42	0.05%	107.89%	
Ukraine	117	143	7	2	152	57	0.09%	29.91%	
Southern Europe	2,291	2,699	69	66	2,834	1,130	1.63%	23.70%	
Croatia	14	18	0	0	18	6	0.01%	28.57%	
Greece	89	67	2	3	72	31	0.04%	-19.10%	
Italy	816	1,680	25	29	1,734	633	1.00%	112.50%	
Portugal	180	161	5	4	170	88	0.10%	-5.56%	
Slovenia	51	49	0	1	50	19	0.03%	-1.96%	
Spain	1,035	664	24	26	714	336	0.41%	-31.01%	
Turkey	106	60	13	3	76	17	0.04%	-28.30%	
Others Europe	476	486	19	10	515	91	0.30%	8.19%	

Visitor Arrivals to Cambodia by Country of Residence in April 2008

(by all means of transportation)

Regions Country of Residence	2007		2008			Total	Females	share	change
	Purpose of Visit			2008*	2008*/07				
	Holiday	Business	Others			(%)	(%)		
GRAND TOTAL	165,347	143,977	15,196	3,378	173,903	75,870	100.00%	5.17%	
Americas	14,541	13,572	738	554	14,864	6,164	8.55%	2.22%	
Argentina	94	93	7	4	104	52	0.06%	10.64%	
Brazil	107	108	3	3	114	58	0.07%	6.54%	
Canada	2,615	2,524	131	89	2,744	1,192	1.58%	4.93%	
Chile	55	103	5	7	115	51	0.07%	109.09%	
Colombia	51	35	0	6	41	19	0.02%	-19.61%	
Mexico	350	228	5	1	234	105	0.13%	-33.14%	
Peru	18	20	0	1	21	12	0.01%	16.67%	
United States	10,757	10,044	574	434	11,052	4,584	6.36%	2.74%	
Uruguay	9	2	0	0	2	2	0.00%	-77.78%	
Others Americas	485	415	13	9	437	89	0.25%	-9.90%	
Africa	264	181	34	8	223	49	0.13%	-15.53%	
Cameroon	11	8	3	0	11	0	0.01%	0.00%	
Ghana	11	5	0	0	5	1	0.00%	-54.55%	
Nigeria	56	59	17	1	77	5	0.04%	37.50%	
Sudan	0	0	0	0	0	0	0.00%	#DIV/0!	
South Africa	151	93	13	2	108	34	0.06%	-28.48%	
Others Africa	35	16	1	5	22	9	0.01%	-37.14%	
Middle East	250	277	13	14	304	91	0.17%	21.60%	
Egypt	5	2	0	0	2	0	0.00%	-60.00%	
Iran	39	8	0	1	9	2	0.01%	-76.92%	
Israel	154	242	13	8	263	86	0.15%	70.78%	
Kuwait	19	13	0	2	15	0	0.01%	-21.05%	
Palestine					0		0.00%		
Saudi Arabia	4	1	0	0	1	0	0.00%	-75.00%	
United Arab Emirates					0		0.00%		
Others Middle East	29	11	0	3	14	3	0.01%	-51.72%	
Same-day visitors	17,654				11,352	5,604	6.53%	-35.70%	

Remark:

- Cambodian Overseas: 8,309
- Cambodian Residence:: 26,795

COMPILED BY:

1. Mr. Kong Sopheareak

Director
Statistics & Tourism Information Department
Tel.: +855 23 211593
E-mail: kong@mot.gov.kh

2. Mr. Horth Vanny

Chief of Tourism Statistics Office
Compile and data analysis
Tel.: +855 12 827664