



**KINGDOM OF CAMBODIA
NATION RELIGION KING**



TOURISM STATISTICAL REPORT

SEPTEMBER 2008

MINISTRY OF TOURISM

Statistics and Tourism Information Department

#3, Preah Monivong Blvd., Phnom Penh 12258, Kingdom of Cambodia.

Tel.: +855 23 211593 / Fax: +855 23 212837

Email: info@mot.gov.kh

Website: www.mot.gov.kh

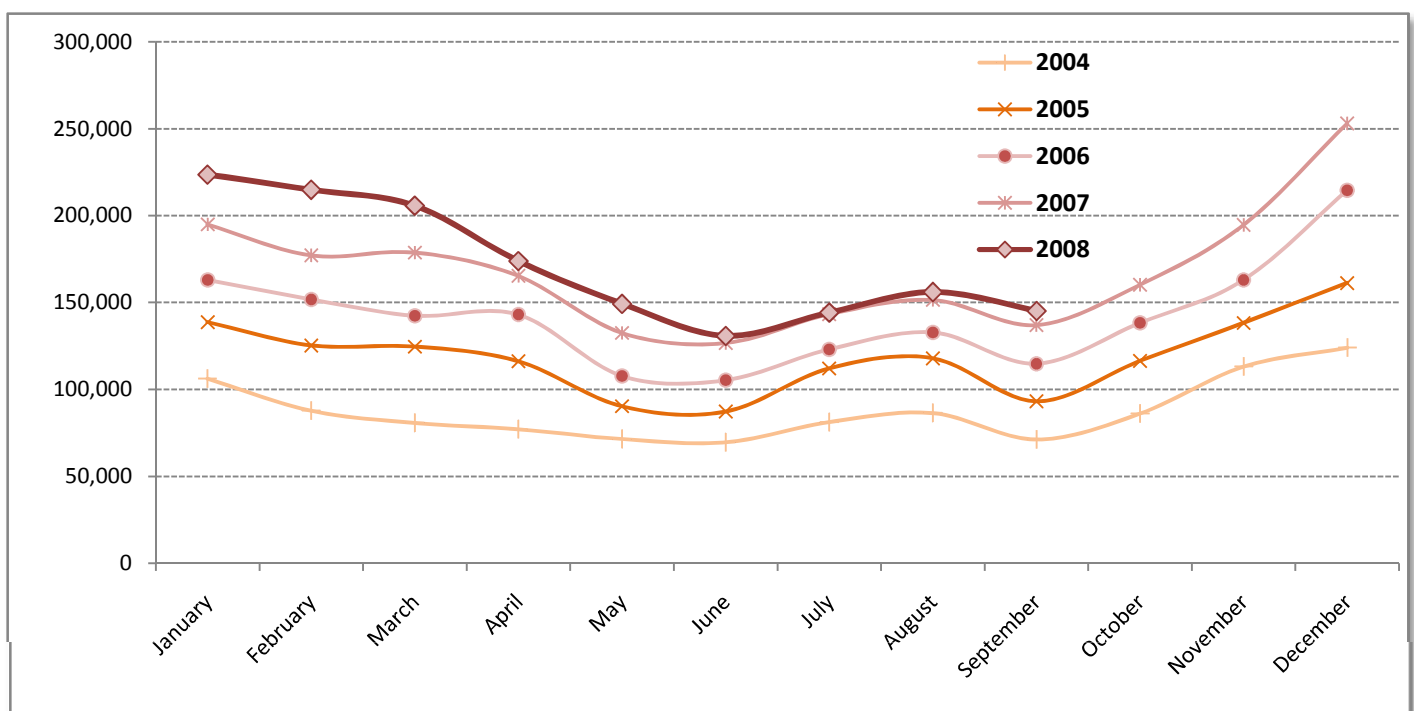
Tourism Highlights

Visitor Arrivals, Average Length of Stay, Hotels Occupancy and Tourism Receipts 1993 - 2007

Years	Visitor Arrivals		Average Length of Stay (days)	Hotels Occupancy (%)	Tourism Receipts (million US\$)
	number	change (%)			
1993	118,183	0.00	N/A	N/A	N/A
1994	176,617	49.44%	N/A	N/A	N/A
1995	219,680	24.38%	8.00	37.00	100
1996	260,489	18.58%	7.50	40.00	118
1997	218,843	-15.99%	6.40	30.00	103
1998	289,524	32.30%	5.20	40.00	166
1999	367,743	27.02%	5.50	44.00	190
2000	466,365	26.82%	5.50	45.00	228
2001	604,919	29.71%	5.50	48.00	304
2002	786,524	30.02%	5.80	50.00	379
2003	701,014	-10.87%	5.50	50.00	347
2004	1,055,202	50.53%	6.30	52.00	578
2005	1,421,615	34.72%	6.30	52.00	832
2006	1,700,041	19.59%	6.50	54.79	1,049
2007	2,015,128	18.53%	6.50	54.79	1,400

International visitor arrivals to Cambodia

Destination	Months	2004	2005	2006	2007	2008	change(%) 2008*/07
Cambodia <i>(all means of transportation, include same-day visitors)</i>	January	106,200	138,718	163,047	194,932	223,581	14.70%
	February	87,795	125,326	151,821	177,130	214,902	21.32%
	March	80,765	124,626	142,437	178,751	205,722	15.09%
	April	77,105	116,219	143,069	165,347	173,903	5.17%
	May	71,486	90,314	107,720	132,512	149,275	12.65%
	June	69,595	87,228	105,298	126,677	130,853	3.30%
	July	81,223	112,116	123,047	143,310	148,449	3.59%
	August	86,450	117,943	132,792	151,478	156,098	3.05%
	September	71,209	93,158	114,781	137,027	145,146	5.93%
	October	86,121	116,382	138,296	160,235		
	November	113,195	138,293	163,068	194,646		
	December	124,058	161,292	214,665	253,083		
	Total		1,055,202	1,421,615	1,700,041	2,015,128	1,547,929



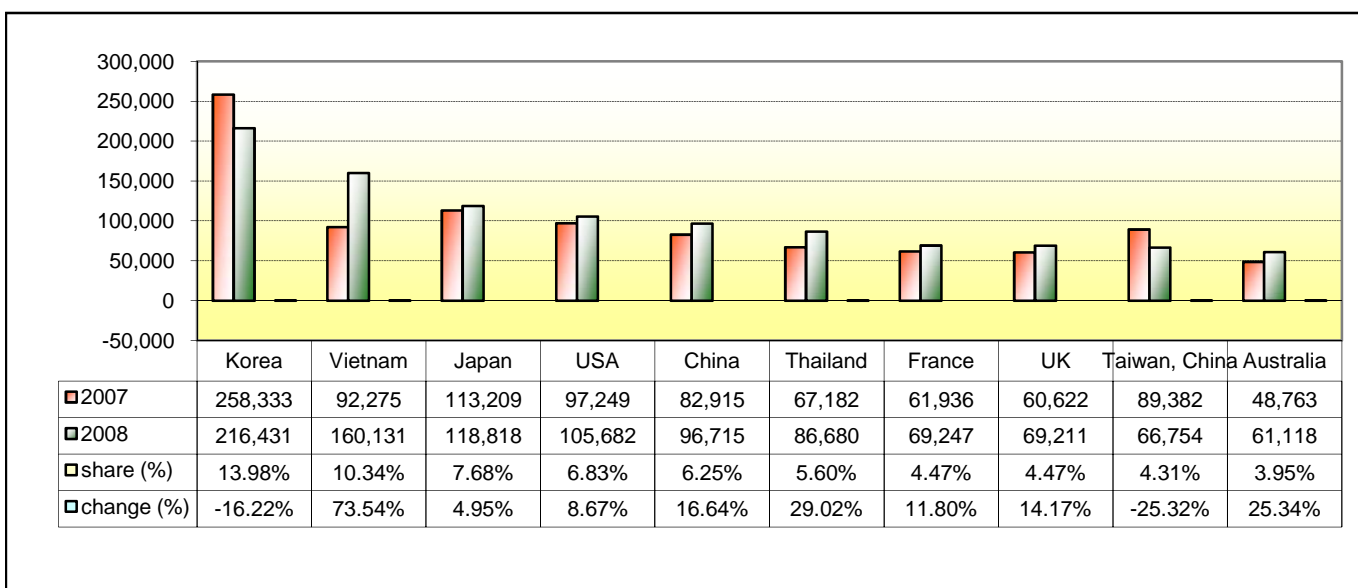
Executive Summary from January - September in 2008

I. Visitor arrivals to Cambodia from Jan - Sep was: **1,547,929**

II Mode of arrivals

	visitors	share (%)
- Air	923,238	59.64
Phnom Penh Int'l Airport	426,600	27.56
Siem Reap Int'l Airport	496,638	32.08
- Land and Water ways	569,154	36.77
Land	516,579	33.37
Boat	52,575	3.40
- Same-day visitors	55,537	3.59
Total	1,547,929	100.00

III. Top ten markets arrivals to Cambodia from Jan - Sep in 2008



IV. Visitor arrivals to Cambodia from Jan - Sep 2007 - 2008

Visitor arrivals			share (%)		change (%)
	2007	2008	2007	2008*	2008*/07
Air	927,742	923,238	65.93	59.64	-0.49
Phnom Penh Int'l Airport	381,519	426,600	27.11	27.56	11.82
Siem Reap Int'l Airport	546,223	496,638	38.82	32.08	-9.08
Land and Water ways	411,422	569,154	29.24	36.77	38.34
Land	381,925	516,579	27.14	33.37	35.26
Boat	29,497	52,575	2.10	3.40	78.24
Sub-Total	1,339,164	1,492,392	95.17	96.41	11.44
Same-day visitors	68,000	55,537	4.83	3.59	-18.33
Total	1,407,164	1,547,929	100.00	100.00	10.00

V. Remark: Percentage share of visitor arrivals at destination from Jan - Sep 2008

Visitor arrivals			share (%)		change (%)
	2007	2008	2007	2008*	2008*/07
Phnom Penh & Other Destinations	619,893	760,130	44.05%	49.11%	22.62%
Siem Reap Province	787,271	787,799	55.95%	50.89%	0.07%
Total	1,407,164	1,547,929	100.00%	100.00%	10.00%

Visitor Arrivals to Cambodia by Country of Residence in January - September 2008

(by all means of transportation)

Regions Country of Residence	2007	2008			Total	Females	share	change
		Purpose of Visit					(%)	(%)
		Holiday	Business	Others			2008*	2008*/07
GRAND TOTAL	1,407,164	1,345,904	120,993	25,495	1,547,929	670,016	100.00%	10.00%
Asia and the Pacific	913,732	891,618	101,536	13,799	1,006,953	454,993	65.05%	10.20%
ASEAN	289,458	355,990	46,996	7,313	410,299	189,132	26.51%	41.75%
Brunei Darussalam	274	189	9	46	244	103	0.02%	-10.95%
Indonesia	5,902	4,006	2,500	238	6,744	2,443	0.44%	14.27%
Laos	14,644	40,133	94	283	40,510	26,386	2.62%	176.63%
Malaysia	61,483	54,250	3,624	205	58,079	20,227	3.75%	-5.54%
Myanmar	1,345	1,348	334	106	1,788	666	0.12%	32.94%
Philippines	21,346	23,951	3,581	768	28,300	16,441	1.83%	32.58%
Singapore	25,007	26,255	1,444	124	27,823	9,740	1.80%	11.26%
Thailand	67,182	74,139	10,604	1,937	86,680	32,894	5.60%	29.02%
Vietnam	92,275	131,719	24,806	3,606	160,131	80,232	10.34%	73.54%
Eastern Asia	545,854	449,940	47,196	3,975	501,111	231,338	32.37%	-8.20%
China	82,915	70,432	25,536	747	96,715	40,743	6.25%	16.64%
Hong Kong, China	1,891	1,920	387	0	2,307	796	0.15%	22.00%
Japan	113,209	113,271	3,625	1,922	118,818	57,836	7.68%	4.95%
Mongolia	124	72	6	8	86	48	0.01%	-30.65%
South Korea	258,333	203,565	11,609	1,257	216,431	101,811	13.98%	-16.22%
Taiwan, China	89,382	60,680	6,033	41	66,754	30,104	4.31%	-25.32%
Southern Asia	9,979	8,044	2,734	718	11,496	2,688	0.74%	15.20%
Afghanistan	22	11	0	16	27	7	0.00%	22.73%
Bangladesh	500	269	160	73	502	82	0.03%	0.40%
India	8,047	6,709	2,193	410	9,312	2,223	0.60%	15.72%
Nepal	484	471	141	64	676	161	0.04%	39.67%
Pakistan	423	276	76	86	438	52	0.03%	3.55%
Srilanka	503	308	164	69	541	163	0.03%	7.55%
Oceania	57,178	65,200	4,203	1,666	71,069	30,881	4.59%	24.29%
Australia	48,763	56,111	3,580	1,427	61,118	26,823	3.95%	25.34%
New Zealand	8,415	9,089	623	239	9,951	4,058	0.64%	18.25%
Others Asia & the Pacific	11,263	12,444	407	127	12,978	954	0.84%	15.23%
Europe	280,894	306,694	12,226	7,075	325,995	127,313	21.06%	16.06%
Northern Europe	94,678	102,374	4,403	2,122	108,899	41,092	7.04%	15.02%
Denmark	5,933	6,255	182	188	6,625	2,595	0.43%	11.66%
Finland	3,562	4,231	164	175	4,570	1,600	0.30%	28.30%
Iceland	145	186	2	0	188	65	0.01%	29.66%
Ireland	7,360	8,188	216	130	8,534	3,640	0.55%	15.95%
Norway	4,563	5,484	178	86	5,748	2,174	0.37%	25.97%
Sweden	12,493	13,386	377	260	14,023	5,796	0.91%	12.25%
United Kingdom	60,622	64,644	3,284	1,283	69,211	25,222	4.47%	14.17%
Western Europe	132,275	139,921	6,294	3,968	150,183	61,236	9.70%	13.54%
Austria	4,678	5,001	62	36	5,099	2,094	0.33%	9.00%
Belgium	7,821	8,171	367	350	8,888	3,476	0.57%	13.64%
France	61,936	63,161	3,924	2,162	69,247	29,063	4.47%	11.80%
Germany	34,596	39,128	1,015	847	40,990	16,182	2.65%	18.48%
Luxembourg	237	347	4	15	366	147	0.02%	54.43%
Netherlands	14,253	14,889	555	339	15,783	6,397	1.02%	10.73%
Switzerland	8,754	9,224	367	219	9,810	3,877	0.63%	12.06%
Eastern Europe	13,081	19,741	527	287	20,555	9,651	1.33%	57.14%
Bulgaria	174	206	10	9	225	87	0.01%	29.31%
Czech	1,202	1,400	20	46	1,466	595	0.09%	21.96%
Hungary	1,634	1,614	45	29	1,688	749	0.11%	3.30%
Poland	2,374	3,509	37	38	3,584	1,709	0.23%	50.97%
Romania	239	310	23	9	342	196	0.02%	43.10%
Russia	6,190	11,134	318	118	11,570	5,549	0.75%	86.91%
Slovakia	282	422	15	30	467	199	0.03%	65.60%
Ukraine	986	1,146	59	8	1,213	567	0.08%	23.02%
Southern Europe	29,805	32,586	637	593	33,816	14,466	2.18%	13.46%
Croatia	149	239	6	17	262	112	0.02%	75.84%
Greece	964	963	15	18	996	389	0.06%	3.32%
Italy	13,043	14,192	257	248	14,697	5,625	0.95%	12.68%
Portugal	1,731	1,650	51	33	1,734	811	0.11%	0.17%
Slovenia	379	553	11	4	568	256	0.04%	49.87%
Spain	12,467	13,817	193	183	14,193	6,829	0.92%	13.84%
Turkey	1,072	1,172	104	90	1,366	444	0.09%	27.43%
Others Europe	11,055	12,072	365	105	12,542	868	0.81%	13.45%

Visitor Arrivals to Cambodia by Country of Residence in January - September 2008

(by all means of transportation)

Regions Country of Residence	2007	2008			Total	Females	share	change
		Purpose of Visit					(%)	(%)
		Holiday	Business	Others			2008*	2008*/07
GRAND TOTAL	1,407,164	1,345,904	120,993	25,495	1,547,929	670,016	100.00%	10.00%
Americas	136,240	140,285	6,760	4,432	151,477	60,431	9.79%	11.18%
Argentina	835	1,139	24	21	1,184	529	0.08%	41.80%
Brazil	1,048	1,333	25	50	1,408	654	0.09%	34.35%
Canada	23,581	25,144	1,200	644	26,988	11,792	1.74%	14.45%
Chile	1,130	1,174	17	14	1,205	609	0.08%	6.64%
Colombia	446	532	5	37	574	259	0.04%	28.70%
Mexico	2,368	2,333	29	17	2,379	1,174	0.15%	0.46%
Peru	220	230	4	21	255	127	0.02%	15.91%
United States	97,249	96,914	5,221	3,547	105,682	44,487	6.83%	8.67%
Uruguay	260	133	3	1	137	86	0.01%	-47.31%
Others Americas	9,103	11,353	232	80	11,665	714	0.75%	28.14%
Africa	2,402	2,366	342	97	2,805	860	0.18%	16.78%
Cameroon	97	171	20	3	194	44	0.01%	100.00%
Ghana	140	58	13	6	77	18	0.00%	-45.00%
Nigeria	454	526	157	20	703	46	0.05%	54.85%
Sudan	5	19	7	4	30	7	0.00%	500.00%
South Africa	1,273	1,374	126	26	1,526	653	0.10%	19.87%
Others Africa	433	218	19	38	275	92	0.02%	-36.49%
Middle East	5,896	4,941	129	92	5,162	1,778	0.33%	-12.45%
Egypt	60	88	3	5	96	23	0.01%	60.00%
Iran	287	153	10	10	173	38	0.01%	-39.72%
Israel	4,735	4,130	102	43	4,275	1,643	0.28%	-9.71%
Kuwait	351	363	2	7	372	12	0.02%	5.98%
Palestine	0	0	0	0	0	0	0.00%	
Saudi Arabia	70	34	2	0	36	0	0.00%	-48.57%
United Arab Emirates	0	0	0	0	0	0	0.00%	
Others Middle East	393	173	10	27	210	62	0.01%	-46.56%
Same-day visitors	68,000				55,537	24,641	3.59%	-18.33%

Remark:

- Cambodian Overseas: 66,062
- Cambodian Residence: 895,385

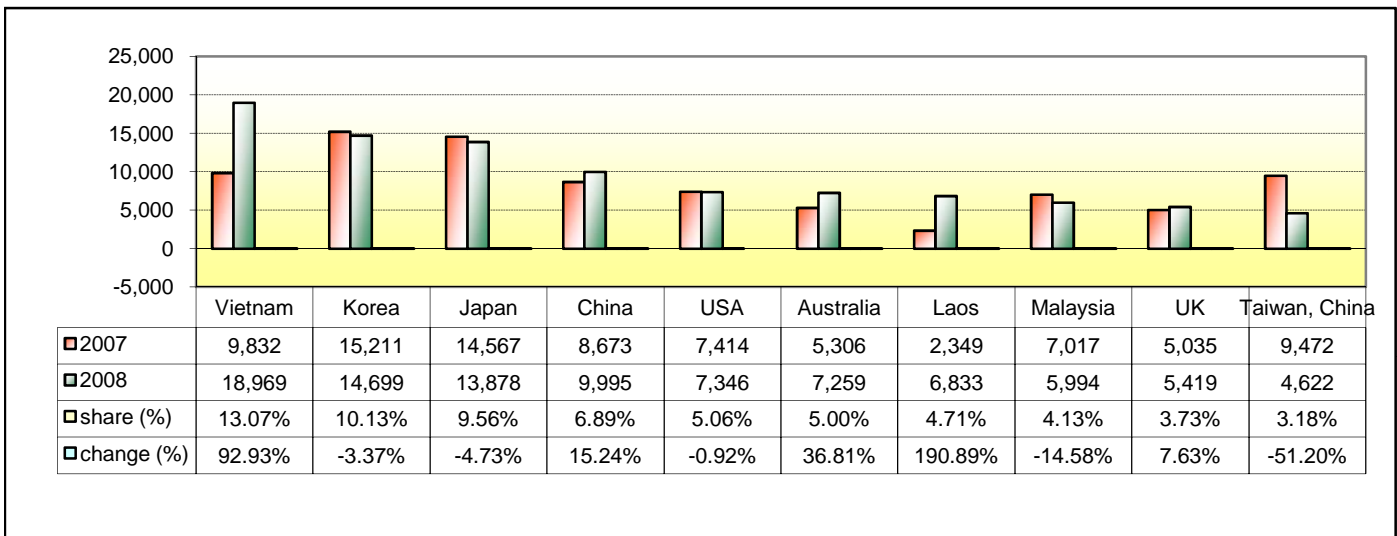
Executive Summary in September 2008

I. Visitor arrivals to Cambodia in September was: **145,146**

II. Mode of arrivals

	visitors	share (%)
- Air	82,764	57.02
Phnom Penh Int'l Airport	44,223	30.47
Siem Reap Int'l Airport	38,541	26.55
- Land and Water ways	55,215	38.04
Land	49,640	34.20
Boat	5,575	3.84
- Same-day visitors	7,167	4.94
Total	145,146	100.00

III. Top ten markets arrivals to Cambodia in September 2008



IV. Visitor arrivals to Cambodia in September 2007 - 2008

Visitor arrivals			share (%)		change (%)
	2007	2008	2007	2008*	2008*/07
Air	85,779	82,764	62.60	57.02	-3.51
Phnom Penh Int'l Airport	38,810	44,223	28.32	30.47	13.95
Siem Reap Int'l Airport	46,969	38,541	34.28	26.55	-17.94
Land and Water ways	36,484	55,215	26.63	38.04	51.34
Land	34,087	49,640	24.88	34.20	45.63
Boat	2,397	5,575	1.75	3.84	132.58
Sub-Total	122,263	137,979	89.23	95.06	12.85
Same-day visitors	14,764	7,167	10.77	4.94	-51.46
Total	137,027	145,146	100.00	100.00	5.93

V. Remark: Percentage share of visitor arrivals at destination in September 2008

Visitor arrivals			share (%)		change (%)
	2007	2008	2007	2008*	2008*/07
Phnom Penh & Other Destinations	80,857	80,291	59.01%	55.32%	-0.70%
Siem Reap Province	56,170	64,855	40.99%	44.68%	15.46%
Total	137,027	145,146	100.00%	100.00%	5.93%

Visitor Arrivals to Cambodia by Country of Residence in September 2008

(by all means of transportation)

Regions Country of Residence	2007	2008			Total	Females	share (%) 2008*	change (%) 2008*/07
		Purpose of Visit						
		Holiday	Business	Others				
GRAND TOTAL	137,027	123,673	11,874	2,432	145,146	59,196	100.00%	5.93%
Asia and the Pacific	88,883	88,699	10,027	1,241	99,967	43,269	68.87%	12.47%
ASEAN	31,958	38,888	4,644	574	44,106	19,457	30.39%	38.01%
Brunei Darussalam	10	4	1	6	11	4	0.01%	10.00%
Indonesia	747	468	247	7	722	270	0.50%	-3.35%
Laos	2,349	6,807	11	15	6,833	4,440	4.71%	190.89%
Malaysia	7,017	5,595	367	32	5,994	2,253	4.13%	-14.58%
Myanmar	125	141	42	8	191	44	0.13%	52.80%
Philippines	2,510	2,582	451	75	3,108	1,807	2.14%	23.82%
Singapore	2,669	2,891	109	10	3,010	1,018	2.07%	12.78%
Thailand	6,699	4,005	1,092	171	5,268	1,728	3.63%	-21.36%
Vietnam	9,832	16,395	2,324	250	18,969	7,893	13.07%	92.93%
Eastern Asia	48,094	38,308	4,662	405	43,375	19,718	29.88%	-9.81%
China	8,673	7,438	2,488	69	9,995	4,161	6.89%	15.24%
Hong Kong, China	162	117	61	0	178	43	0.12%	9.88%
Japan	14,567	13,330	346	202	13,878	7,179	9.56%	-4.73%
Mongolia	9	3	0	0	3	2	0.00%	-66.67%
South Korea	15,211	13,314	1,251	134	14,699	6,469	10.13%	-3.37%
Taiwan, China	9,472	4,106	516	0	4,622	1,864	3.18%	-51.20%
Southern Asia	1,316	760	289	61	1,110	224	0.76%	-15.65%
Afghanistan	2	2	0	2	4	1	0.00%	100.00%
Bangladesh	52	20	9	3	32	8	0.02%	-38.46%
India	1,099	636	242	38	916	190	0.63%	-16.65%
Nepal	54	45	13	4	62	10	0.04%	14.81%
Pakistan	62	23	6	6	35	1	0.02%	-43.55%
Srilanka	47	34	19	8	61	14	0.04%	29.79%
Oceania	6,210	7,820	418	189	8,427	3,774	5.81%	35.70%
Australia	5,306	6,743	354	162	7,259	3,299	5.00%	36.81%
New Zealand	904	1,077	64	27	1,168	475	0.80%	29.20%
Others Asia & the Pacific	1,305	2,923	14	12	2,949	96	2.03%	125.98%
Europe	21,632	22,920	1,156	696	24,772	8,376	17.07%	14.52%
Northern Europe	7,065	7,012	419	216	7,647	2,655	5.27%	8.24%
Denmark	337	312	19	20	351	123	0.24%	4.15%
Finland	208	192	12	21	225	76	0.16%	8.17%
Iceland	5	11	0	0	11	4	0.01%	120.00%
Ireland	705	864	19	14	897	352	0.62%	27.23%
Norway	274	286	16	10	312	106	0.21%	13.87%
Sweden	501	389	33	10	432	145	0.30%	-13.77%
United Kingdom	5,035	4,958	320	141	5,419	1,849	3.73%	7.63%
Western Europe	9,360	8,834	608	390	9,832	3,608	6.77%	5.04%
Austria	252	240	5	1	246	95	0.17%	-2.38%
Belgium	656	490	41	29	560	199	0.39%	-14.63%
France	4,120	3,804	347	222	4,373	1,643	3.01%	6.14%
Germany	2,603	2,632	117	81	2,830	1,028	1.95%	8.72%
Luxembourg	1,076	25	0	2	27	12	0.02%	-97.49%
Netherlands	11	1,080	58	35	1,173	425	0.81%	10563.64%
Switzerland	642	563	40	20	623	206	0.43%	-2.96%
Eastern Europe	808	1,442	49	15	1,506	764	1.04%	86.39%
Bulgaria	11	8	1	0	9	0	0.01%	-18.18%
Czech	62	55	1	2	58	33	0.04%	-6.45%
Hungary	56	60	2	0	62	26	0.04%	10.71%
Poland	160	239	6	1	246	117	0.17%	53.75%
Romania	18	61	5	0	66	41	0.05%	266.67%
Russia	424	920	25	10	955	490	0.66%	125.24%
Slovakia	13	17	1	2	20	6	0.01%	53.85%
Ukraine	64	82	8	0	90	51	0.06%	40.63%
Southern Europe	3,094	2,719	70	64	2,853	1,264	1.97%	-7.79%
Croatia	18	14	2	0	16	4	0.01%	-11.11%
Greece	32	42	1	4	47	19	0.03%	46.88%
Italy	689	625	28	33	686	222	0.47%	-0.44%
Portugal	169	114	6	2	122	52	0.08%	-27.81%
Slovenia	17	25	2	0	27	13	0.02%	58.82%
Spain	2,042	1,767	24	13	1,804	905	1.24%	-11.66%
Turkey	127	132	7	12	151	49	0.10%	18.90%
Others Europe	1,305	2,913	10	11	2,934	85	2.02%	124.83%

Visitor Arrivals to Cambodia by Country of Residence in September 2008

(by all means of transportation)

Regions Country of Residence	2007	2008			Total	Females	share	change
		Purpose of Visit					(%)	(%)
		Holiday	Business	Others			2008*	2008*/07
GRAND TOTAL	137,027	123,673	11,874	2,432	145,146	59,196	100.00%	5.93%
Americas	10,924	11,360	626	466	12,452	3,881	8.58%	13.99%
Argentina	91	86	1	3	90	38	0.06%	-1.10%
Brazil	127	155	3	7	165	63	0.11%	29.92%
Canada	1,404	1,341	134	69	1,544	629	1.06%	9.97%
Chile	335	75	0	0	75	38	0.05%	-77.61%
Colombia	77	74	3	3	80	38	0.06%	3.90%
Mexico	175	205	0	3	208	116	0.14%	18.86%
Peru	14	23	2	7	32	16	0.02%	128.57%
United States	7,414	6,507	473	366	7,346	2,864	5.06%	-0.92%
Uruguay	8	3	0	0	3	1	0.00%	-62.50%
Others Americas	1,279	2,891	10	8	2,909	78	2.00%	127.44%
Africa	224	307	50	17	374	108	0.26%	66.96%
Cameroon	8	19	6	0	25	3	0.02%	212.50%
Ghana	10	4	2	3	9	1	0.01%	-10.00%
Nigeria	61	55	19	2	76	6	0.05%	24.59%
Sudan	0	4	1	1	6	1	0.00%	
South Africa	121	144	19	6	169	77	0.12%	39.67%
Others Africa	24	81	3	5	89	20	0.06%	270.83%
Middle East	600	387	15	12	414	113	0.29%	-31.00%
Egypt	1	4	0	0	4	1	0.00%	300.00%
Iran	25	15	3	2	20	3	0.01%	-20.00%
Israel	544	282	8	7	297	93	0.20%	-45.40%
Kuwait	14	20	2	0	22	1	0.02%	57.14%
Palestine	0				0		0.00%	
Saudi Arabia	1	2	0	0	2	0	0.00%	100.00%
United Arab Emirates	0				0		0.00%	
Others Middle East	15	64	2	3	69	15	0.05%	360.00%
Same-day visitors	14,764				7,167	3,449	4.94%	-51.46%

Remark:

- Cambodian Overseas: 4,343
- Cambodian Residence: 19,544

COMPILED BY:

1. Mr. Kong Sopheareak

Director
Statistics & Tourism Information Department
Tel.: +855 23 211593
E-mail: kong@mot.gov.kh

2. Mr. Horth Vanny

Chief of Tourism Statistics Office
Compile and data analysis
Tel.: +855 12 827664