



**KINGDOM OF CAMBODIA
NATION RELIGION KING**



TOURISM STATISTICAL REPORT

NOVEMBER 2008

MINISTRY OF TOURISM

Statistics and Tourism Information Department

No. 63, Street 348, Sangkat Toul Svay Prey II, Phnom Penh, Kingdom of Cambodia.

Tel.: +855 23 211593 / Fax: +855 23 212837

Email: info@mot.gov.kh

Website: www.mot.gov.kh

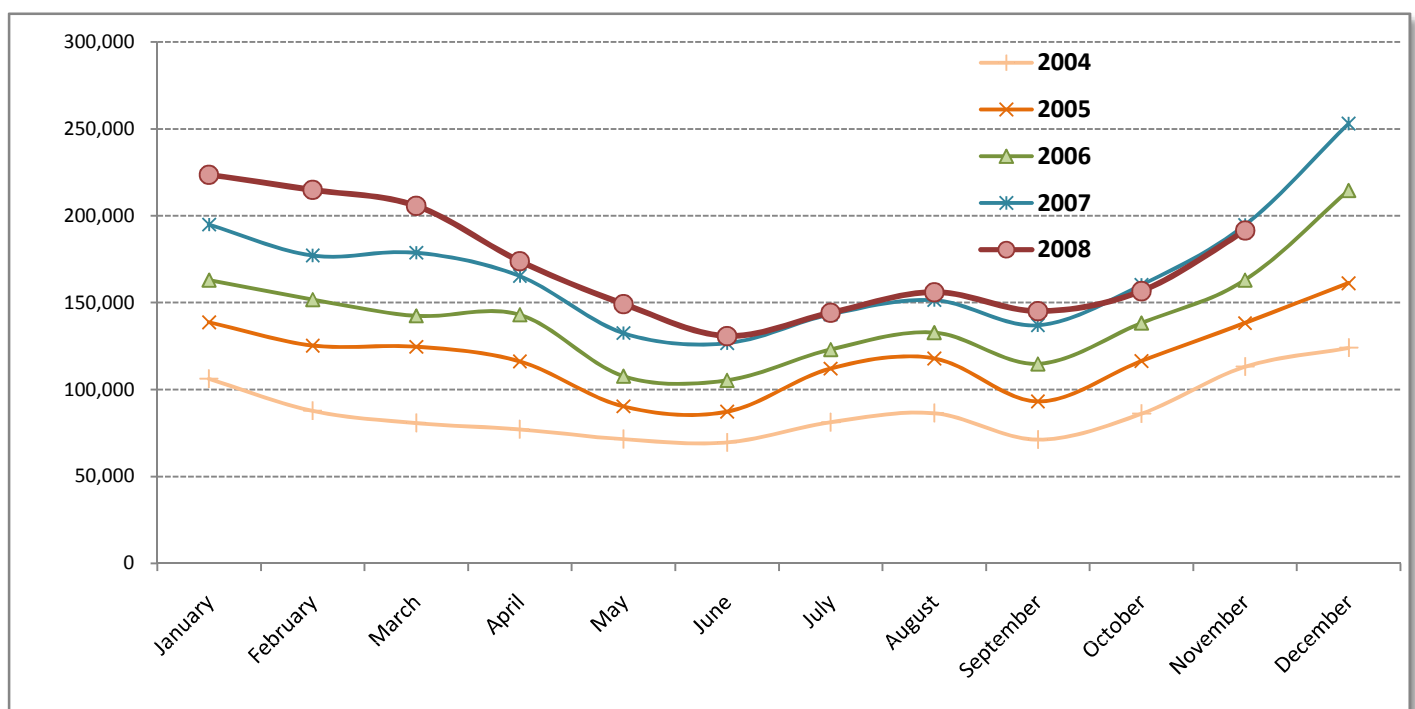
Tourism Highlights

Visitor Arrivals, Average Length of Stay, Hotels Occupancy and Tourism Receipts 1993 - 2007

Years	Visitor Arrivals		Average Length of Stay (days)	Hotels Occupancy (%)	Tourism Receipts (million US\$)
	number	change (%)			
1993	118,183	0.00	N/A	N/A	N/A
1994	176,617	49.44%	N/A	N/A	N/A
1995	219,680	24.38%	8.00	37.00	100
1996	260,489	18.58%	7.50	40.00	118
1997	218,843	-15.99%	6.40	30.00	103
1998	289,524	32.30%	5.20	40.00	166
1999	367,743	27.02%	5.50	44.00	190
2000	466,365	26.82%	5.50	45.00	228
2001	604,919	29.71%	5.50	48.00	304
2002	786,524	30.02%	5.80	50.00	379
2003	701,014	-10.87%	5.50	50.00	347
2004	1,055,202	50.53%	6.30	52.00	578
2005	1,421,615	34.72%	6.30	52.00	832
2006	1,700,041	19.59%	6.50	54.79	1,049
2007	2,015,128	18.53%	6.50	54.79	1,400

International visitor arrivals to Cambodia

Destination	Months	2004	2005	2006	2007	2008	change(%) 2008*/07
Cambodia <i>(all means of transportation, include same-day visitors)</i>	January	106,200	138,718	163,047	194,932	223,581	14.70%
	February	87,795	125,326	151,821	177,130	214,902	21.32%
	March	80,765	124,626	142,437	178,751	205,722	15.09%
	April	77,105	116,219	143,069	165,347	173,903	5.17%
	May	71,486	90,314	107,720	132,512	149,275	12.65%
	June	69,595	87,228	105,298	126,677	130,853	3.30%
	July	81,223	112,116	123,047	143,310	148,449	3.59%
	August	86,450	117,943	132,792	151,478	156,098	3.05%
	September	71,209	93,158	114,781	137,027	145,146	5.93%
	October	86,121	116,382	138,296	160,235	156,718	-2.19%
	November	113,195	138,293	163,068	194,646	191,549	-1.59%
	December	124,058	161,292	214,665	253,083		
	Total		1,055,202	1,421,615	1,700,041	2,015,128	1,896,196



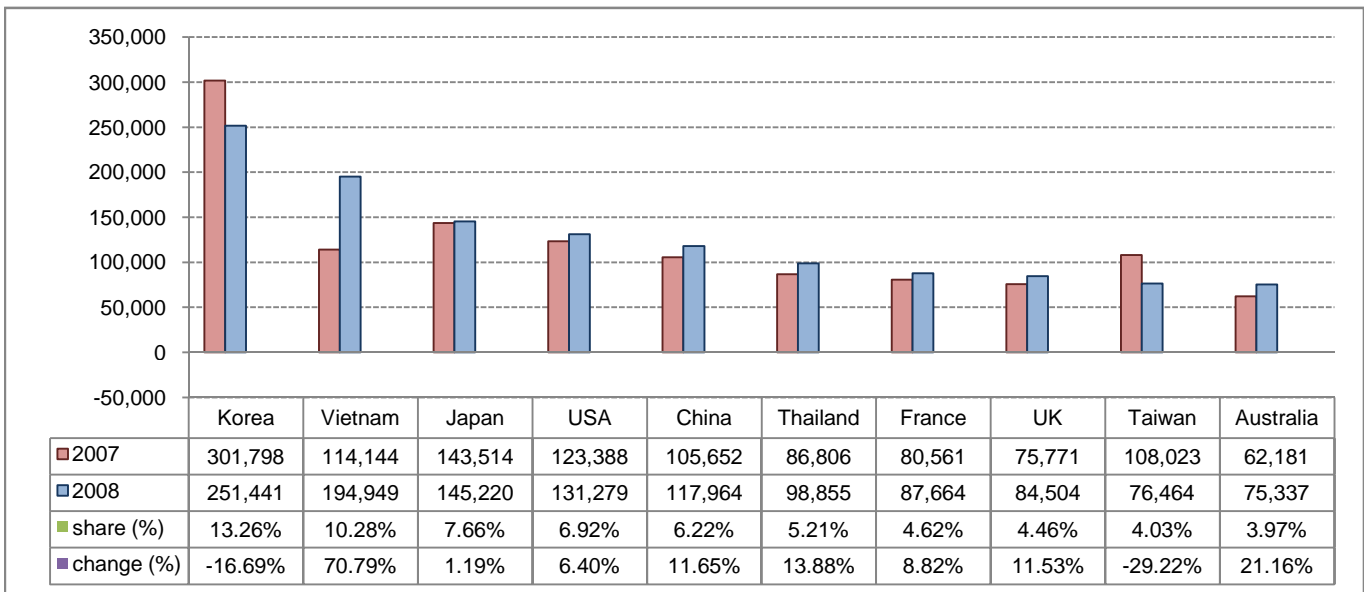
Executive Summary from January - November in 2008

I. Visitor arrivals to Cambodia from Jan - Nov was: **1,896,196**

II Mode of arrivals

	visitors	share (%)
- Air	1,124,204	59.29
Phnom Penh Int'l Airport	518,546	27.35
Siem Reap Int'l Airport	605,658	31.94
- Land and Water ways	689,120	36.34
Land	623,503	32.88
Boat	65,617	3.46
- Same-day visitors	82,872	4.37
Total	1,896,196	100.00

III. Top ten markets arrivals to Cambodia from Jan - Nov in 2008



IV. Visitor arrivals to Cambodia from Jan - Nov 2007 - 2008

Visitor arrivals			share (%)		change (%)
	2007	2008	2007	2008*	2008*/07
Air	1,161,568	1,124,204	65.92	59.29	-3.22
Phnom Penh Int'l Airport	479,209	518,546	27.20	27.35	8.21
Siem Reap Int'l Airport	682,359	605,658	38.73	31.94	-11.24
Land and Water ways	506,701	689,120	28.76	36.34	36.00
Land	469,109	623,503	26.62	32.88	32.91
Boat	37,592	65,617	2.13	3.46	74.55
Sub-Total	1,668,269	1,813,324	94.68	95.63	8.69
Same-day visitors	93,776	82,872	5.32	4.37	-11.63
Total	1,762,045	1,896,196	100.00	100.00	7.61

V. Remark: Percentage share of visitor arrivals at destination from Jan - Nov 2008

Visitor arrivals			share (%)		change (%)
	2007	2008	2007	2008*	2008*/07
Phnom Penh & Other Destinations	764,094	933,213	43.36%	49.22%	22.13%
Siem Reap Province	997,951	962,983	56.64%	50.78%	-3.50%
Total	1,762,045	1,896,196	100.00%	100.00%	7.61%

Visitor Arrivals to Cambodia by Country of Residence in January - November 2008

(by all means of transportation)

Regions Country of Residence	2007	2008			Total	Females	share (%) 2008*	change (%) 2008*/07
		Purpose of Visit						
		Holiday	Business	Others				
GRAND TOTAL	1,762,045	1,633,234	148,351	31,739	1,896,196	819,746	100.00%	7.61%
Asia and the Pacific	1,123,419	1,068,491	124,243	17,214	1,209,948	544,532	63.81%	7.70%
ASEAN	363,320	433,481	57,685	8,930	500,096	230,401	26.37%	37.65%
Brunei Darussalam	309	206	14	82	302	114	0.02%	-2.27%
Indonesia	7,621	4,871	3,035	314	8,220	3,053	0.43%	7.86%
Laos	19,774	53,360	114	355	53,829	35,761	2.84%	172.22%
Malaysia	75,411	66,682	4,501	244	71,427	25,338	3.77%	-5.28%
Myanmar	1,608	1,572	433	137	2,142	790	0.11%	33.21%
Philippines	26,789	30,177	4,451	946	35,574	20,634	1.88%	32.79%
Singapore	30,858	32,899	1,744	155	34,798	12,432	1.84%	12.77%
Thailand	86,806	83,166	13,430	2,259	98,855	36,839	5.21%	13.88%
Vietnam	114,144	160,548	29,963	4,438	194,949	95,440	10.28%	70.79%
Eastern Asia	661,495	531,573	57,463	5,094	594,130	271,362	31.33%	-10.18%
China	105,652	85,786	31,019	1,159	117,964	48,987	6.22%	11.65%
Hong Kong, China	2,358	2,383	547	0	2,930	1,002	0.15%	24.26%
Japan	143,514	138,383	4,472	2,365	145,220	70,248	7.66%	1.19%
Mongolia	150	90	6	15	111	57	0.01%	-26.00%
South Korea	301,798	235,855	14,083	1,503	251,441	117,058	13.26%	-16.69%
Taiwan, China	108,023	69,076	7,336	52	76,464	34,010	4.03%	-29.22%
Southern Asia	12,611	9,823	3,391	901	14,115	3,344	0.74%	11.93%
Afghanistan	33	21	0	17	38	9	0.00%	15.15%
Bangladesh	618	342	203	110	655	99	0.03%	5.99%
India	10,191	8,164	2,700	491	11,355	2,777	0.60%	11.42%
Nepal	645	588	179	89	856	209	0.05%	32.71%
Pakistan	527	339	96	110	545	65	0.03%	3.42%
Sri Lanka	597	369	213	84	666	185	0.04%	11.56%
Oceania	72,779	80,378	5,238	2,078	87,694	38,254	4.62%	20.49%
Australia	62,181	69,093	4,459	1,785	75,337	33,195	3.97%	21.16%
New Zealand	10,598	11,285	779	293	12,357	5,059	0.65%	16.60%
Others Asia & the Pacific	13,214	13,236	466	211	13,913	1,171	0.73%	5.29%
Europe	362,142	383,446	15,140	8,835	407,421	161,475	21.49%	12.50%
Northern Europe	119,370	125,449	5,402	2,574	133,425	50,565	7.04%	11.77%
Denmark	7,554	8,017	247	229	8,493	3,352	0.45%	12.43%
Finland	4,825	5,196	193	194	5,583	1,981	0.29%	15.71%
Iceland	185	244	2	0	246	93	0.01%	32.97%
Ireland	9,462	10,006	260	153	10,419	4,474	0.55%	10.11%
Norway	5,944	6,694	225	108	7,027	2,688	0.37%	18.22%
Sweden	15,629	16,391	449	313	17,153	7,140	0.90%	9.75%
United Kingdom	75,771	78,901	4,026	1,577	84,504	30,837	4.46%	11.53%
Western Europe	173,915	180,054	7,894	4,996	192,944	79,619	10.18%	10.94%
Austria	6,027	6,449	79	45	6,573	2,741	0.35%	9.06%
Belgium	10,656	11,069	438	441	11,948	4,780	0.63%	12.12%
France	80,561	80,055	4,921	2,688	87,664	37,087	4.62%	8.82%
Germany	46,389	51,255	1,299	1,087	53,641	21,592	2.83%	15.63%
Luxembourg	460	413	8	19	440	174	0.02%	-4.35%
Netherlands	18,328	18,928	692	451	20,071	8,218	1.06%	9.51%
Switzerland	11,494	11,885	457	265	12,607	5,027	0.66%	9.68%
Eastern Europe	17,674	25,890	627	359	26,876	12,649	1.42%	52.07%
Bulgaria	223	248	10	9	267	112	0.01%	19.73%
Czech	1,654	1,781	26	62	1,869	765	0.10%	13.00%
Hungary	2,028	1,986	52	32	2,070	930	0.11%	2.07%
Poland	3,445	4,974	42	46	5,062	2,405	0.27%	46.94%
Romania	324	472	32	9	513	284	0.03%	58.33%
Russia	8,373	14,407	386	158	14,951	7,207	0.79%	78.56%
Slovakia	459	593	16	32	641	258	0.03%	39.65%
Ukraine	1,168	1,429	63	11	1,503	688	0.08%	28.68%
Southern Europe	38,190	39,249	798	736	40,783	17,591	2.15%	6.79%
Croatia	183	270	7	19	296	125	0.02%	61.75%
Greece	1,074	1,160	23	25	1,208	463	0.06%	12.48%
Italy	16,214	16,896	344	323	17,563	6,835	0.93%	8.32%
Portugal	2,305	1,969	59	38	2,066	953	0.11%	-10.37%
Slovenia	538	685	11	8	704	314	0.04%	30.86%
Spain	16,527	16,919	231	223	17,373	8,392	0.92%	5.12%
Turkey	1,349	1,350	123	100	1,573	509	0.08%	16.60%
Others Europe	12,993	12,804	419	170	13,393	1,051	0.71%	3.08%

Visitor Arrivals to Cambodia by Country of Residence in January - November 2008

(by all means of transportation)

Regions Country of Residence	2007	2008			Total	Females	share	change
		Purpose of Visit					(%)	(%)
		Holiday	Business	Others			2008*	2008*/07
GRAND TOTAL	1,762,045	1,633,234	148,351	31,739	1,896,196	819,746	100.00%	7.61%
Americas	172,646	172,089	8,395	5,453	185,937	75,498	9.81%	7.70%
Argentina	1,044	1,471	28	24	1,523	709	0.08%	45.88%
Brazil	1,412	1,767	28	62	1,857	900	0.10%	31.52%
Canada	30,175	30,813	1,531	770	33,114	14,529	1.75%	9.74%
Chile	1,341	1,494	23	14	1,531	766	0.08%	14.17%
Colombia	617	650	9	41	700	321	0.04%	13.45%
Mexico	3,075	2,949	31	24	3,004	1,506	0.16%	-2.31%
Peru	310	332	4	26	362	189	0.02%	16.77%
United States	123,388	120,425	6,484	4,370	131,279	55,584	6.92%	6.40%
Uruguay	269	154	3	1	158	98	0.01%	-41.26%
Others Americas	11,015	12,034	254	121	12,409	896	0.65%	12.66%
Africa	2,902	2,908	417	127	3,452	1,051	0.18%	18.95%
Cameroon	127	213	24	6	243	47	0.01%	91.34%
Ghana	147	77	15	8	100	20	0.01%	-31.97%
Nigeria	577	675	191	26	892	66	0.05%	54.59%
Sudan	6	22	7	7	36	7	0.00%	500.00%
South Africa	1,540	1,672	154	31	1,857	794	0.10%	20.58%
Others Africa	505	249	26	49	324	117	0.02%	-35.84%
Middle East	7,160	6,300	156	110	6,566	2,331	0.35%	-8.30%
Egypt	73	131	3	5	139	41	0.01%	90.41%
Iran	380	229	10	14	253	51	0.01%	-33.42%
Israel	5,792	5,292	123	49	5,464	2,143	0.29%	-5.66%
Kuwait	394	410	3	7	420	13	0.02%	6.60%
Palestine	0	0	0	0	0	0	0.00%	
Saudi Arabia	76	39	4	2	45	2	0.00%	-40.79%
United Arab Emirates	0	0	0	0	0	0	0.00%	
Others Middle East	445	199	13	33	245	81	0.01%	-44.94%
Same-day visitors	93,776				82,872	34,859	4.37%	-11.63%

Remark:

- Cambodian Overseas: 78,771
- Cambodian Residence: 937,988

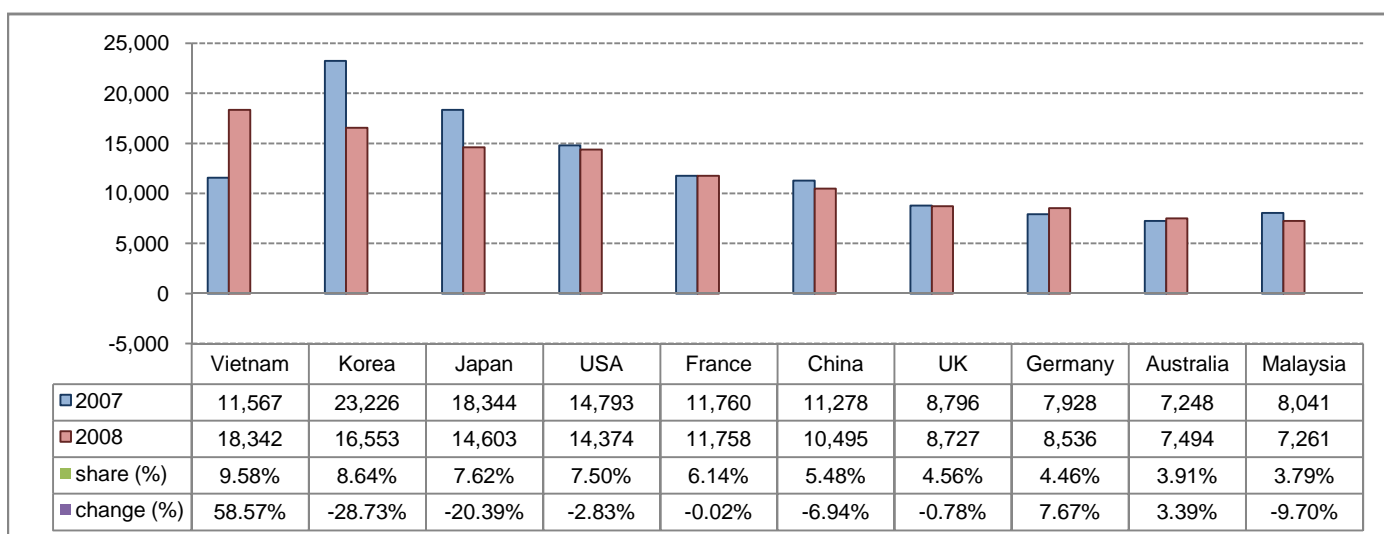
Executive Summary in November 2008

I. Visitor arrivals to Cambodia in November was: **191,549**

II. Mode of arrivals

	visitors	share (%)
- Air	107,791	56.27
Phnom Penh Int'l Airport	48,824	25.49
Siem Reap Int'l Airport	58,967	30.78
- Land and Water ways	67,298	35.13
Land	58,694	30.64
Boat	8,604	4.49
- Same-day visitors	16,460	8.59
Total	191,549	100.00

III. Top ten markets arrivals to Cambodia in November 2008



IV. Visitor arrivals to Cambodia in November 2007 - 2008

Visitor arrivals			share (%)		change (%)
	2007	2008	2007	2008*	2008*/07
Air	130,630	107,791	67.11	56.27	-17.48
Phnom Penh Int'l Airport	53,638	48,824	27.56	25.49	-8.97
Siem Reap Int'l Airport	76,992	58,967	39.55	30.78	-23.41
Land and Water ways	51,092	67,298	26.25	35.13	31.72
Land	46,017	58,694	23.64	30.64	27.55
Boat	5,075	8,604	2.61	4.49	69.54
Sub-Total	181,722	175,089	93.36	91.41	-3.65
Same-day visitors	12,924	16,460	6.64	8.59	27.36
Total	194,646	191,549	100.00	100.00	-1.59

V. Remark: Percentage share of visitor arrivals at destination in November 2008

Visitor arrivals			share (%)		change (%)
	2007	2008	2007	2008*	2008*/07
Phnom Penh & Other Destinations	87,316	95,565	44.86%	49.89%	9.45%
Siem Reap Province	107,330	95,984	55.14%	50.11%	-10.57%
Total	194,646	191,549	100.00%	100.00%	-1.59%

Visitor Arrivals to Cambodia by Country of Residence in November 2008

(by all means of transportation)

Regions Country of Residence	2007	2008			Total	Females	share	change
		Purpose of Visit					(%)	(%)
		Holiday	Business	Others			2008*	2008*/07
GRAND TOTAL	194,646	158,371	13,257	3,461	191,549	85,380	100.00%	-1.59%
Asia and the Pacific	110,691	90,920	10,737	1,992	103,649	46,267	54.11%	-6.36%
ASEAN	37,921	39,996	5,189	981	46,166	22,211	24.10%	21.74%
Brunei Darussalam	28	11	1	8	20	8	0.01%	-28.57%
Indonesia	749	404	285	44	733	337	0.38%	-2.14%
Laos	2,748	6,388	6	46	6,440	4,884	3.36%	134.35%
Malaysia	8,041	6,749	494	18	7,261	2,859	3.79%	-9.70%
Myanmar	140	133	52	16	201	74	0.10%	43.57%
Philippines	2,750	3,296	470	82	3,848	2,253	2.01%	39.93%
Singapore	3,505	3,815	159	23	3,997	1,697	2.09%	14.04%
Thailand	8,393	3,949	1,164	211	5,324	1,944	2.78%	-36.57%
Vietnam	11,567	15,251	2,558	533	18,342	8,155	9.58%	58.57%
Eastern Asia	62,330	41,518	4,731	685	46,934	19,726	24.50%	-24.70%
China	11,278	7,767	2,461	267	10,495	4,228	5.48%	-6.94%
Hong Kong, China	248	215	48	0	263	97	0.14%	6.05%
Japan	18,344	13,899	422	282	14,603	6,375	7.62%	-20.39%
Mongolia	8	13	0	4	17	6	0.01%	112.50%
South Korea	23,226	15,253	1,170	130	16,553	7,082	8.64%	-28.73%
Taiwan, China	9,226	4,371	630	2	5,003	1,938	2.61%	-45.77%
Southern Asia	1,340	848	297	91	1,236	300	0.65%	-7.76%
Afghanistan	7	1	0	0	1	1	0.00%	-85.71%
Bangladesh	61	38	24	18	80	11	0.04%	31.15%
India	1,080	681	218	40	939	250	0.49%	-13.06%
Nepal	83	65	24	10	99	24	0.05%	19.28%
Pakistan	59	30	10	16	56	5	0.03%	-5.08%
Srilanka	50	33	21	7	61	9	0.03%	22.00%
Oceania	8,501	8,126	500	193	8,819	3,911	4.60%	3.74%
Australia	7,248	6,909	417	168	7,494	3,344	3.91%	3.39%
New Zealand	1,253	1,217	83	25	1,325	567	0.69%	5.75%
Others Asia & the Pacific	599	432	20	42	494	119	0.26%	-17.53%
Europe	49,835	48,389	1,563	932	50,884	21,876	26.56%	2.10%
Northern Europe	14,914	13,586	550	247	14,383	5,680	7.51%	-3.56%
Denmark	943	958	35	22	1,015	410	0.53%	7.64%
Finland	988	677	14	11	702	271	0.37%	-28.95%
Iceland	26	48	0	0	48	23	0.03%	84.62%
Ireland	1,186	967	25	12	1,004	445	0.52%	-15.35%
Norway	894	739	22	10	771	311	0.40%	-13.76%
Sweden	2,081	2,058	34	24	2,116	909	1.10%	1.68%
United Kingdom	8,796	8,139	420	168	8,727	3,311	4.56%	-0.78%
Western Europe	26,523	26,324	870	547	27,741	12,214	14.48%	4.59%
Austria	887	1,161	13	6	1,180	530	0.62%	33.03%
Belgium	1,810	1,860	36	44	1,940	849	1.01%	7.18%
France	11,760	10,915	552	291	11,758	5,264	6.14%	-0.02%
Germany	7,928	8,264	151	121	8,536	3,755	4.46%	7.67%
Luxembourg	34	26	4	2	32	8	0.02%	-5.88%
Netherlands	2,365	2,330	70	58	2,458	1,049	1.28%	3.93%
Switzerland	1,739	1,768	44	25	1,837	759	0.96%	5.64%
Eastern Europe	2,981	4,111	49	35	4,195	2,030	2.19%	40.72%
Bulgaria	33	24	0	0	24	18	0.01%	-27.27%
Czech	330	270	4	6	280	115	0.15%	-15.15%
Hungary	250	258	4	2	264	130	0.14%	5.60%
Poland	759	1,164	1	1	1,166	557	0.61%	53.62%
Romania	50	84	7	0	91	48	0.05%	82.00%
Russia	1,366	2,010	32	24	2,066	1,050	1.08%	51.24%
Slovakia	114	134	0	1	135	47	0.07%	18.42%
Ukraine	79	167	1	1	169	65	0.09%	113.92%
Southern Europe	4,827	3,953	75	77	4,105	1,861	2.14%	-14.96%
Croatia	10	28	1	2	31	12	0.02%	210.00%
Greece	76	125	2	4	131	50	0.07%	72.37%
Italy	2,091	1,911	34	38	1,983	896	1.04%	-5.16%
Portugal	403	189	4	2	195	78	0.10%	-51.61%
Slovenia	132	90	0	1	91	43	0.05%	-31.06%
Spain	2,009	1,517	20	21	1,558	741	0.81%	-22.45%
Turkey	106	93	14	9	116	41	0.06%	9.43%
Others Europe	590	415	19	26	460	91	0.24%	-22.03%

Visitor Arrivals to Cambodia by Country of Residence in November 2008

(by all means of transportation)

Regions Country of Residence	2007	2008			Total	Females	share	change
		Purpose of Visit					2008*	2008*07
		Holiday	Business	Others				
GRAND TOTAL	194,646	158,371	13,257	3,461	191,549	85,380	100.00%	-1.59%
Americas	20,274	18,178	899	509	19,586	8,690	10.23%	-3.39%
Argentina	103	189	1	1	191	103	0.10%	85.44%
Brazil	205	235	3	9	247	138	0.13%	20.49%
Canada	4,034	3,432	200	68	3,700	1,677	1.93%	-8.28%
Chile	88	193	1	0	194	93	0.10%	120.45%
Colombia	97	43	2	2	47	26	0.02%	-51.55%
Mexico	339	316	1	0	317	171	0.17%	-6.49%
Peru	37	67	0	4	71	41	0.04%	91.89%
United States	14,793	13,294	676	404	14,374	6,351	7.50%	-2.83%
Uruguay	2	5	0	0	5	3	0.00%	150.00%
Others Americas	576	404	15	21	440	87	0.23%	-23.61%
Africa	257	338	43	17	398	135	0.21%	54.86%
Cameroon	23	30	2	2	34	3	0.02%	47.83%
Ghana	3	14	0	1	15	1	0.01%	400.00%
Nigeria	56	88	22	4	114	16	0.06%	103.57%
Sudan	0	1	0	2	3	0	0.00%	
South Africa	138	192	15	3	210	102	0.11%	52.17%
Others Africa	37	13	4	5	22	13	0.01%	-40.54%
Middle East	665	546	15	11	572	182	0.30%	-13.98%
Egypt	7	25	0	0	25	10	0.01%	257.14%
Iran	58	50	0	2	52	8	0.03%	-10.34%
Israel	549	421	11	3	435	153	0.23%	-20.77%
Kuwait	22	36	1	0	37	1	0.02%	68.18%
Palestine	0	0	0	0	0	0	0.00%	
Saudi Arabia	1	3	1	2	6	1	0.00%	500.00%
United Arab Emirates	0	0	0	0	0	0	0.00%	
Others Middle East	28	11	2	4	17	9	0.01%	-39.29%
Same-day visitors	12,924				16,460	8,230	8.59%	27.36%

Remark:

- Cambodian Overseas: 7,323
- Cambodian Residence: 22,455

COMPILED BY:

1. Mr. Kong Sopheareak

Director
Statistics & Tourism Information Department
Tel.: +855 23 211593
E-mail: kong@mot.gov.kh

2. Mr. Horth Vanny

Chief of Tourism Statistics Office
Compile and data analysis
Tel.: +855 12 827664