



**KINGDOM OF CAMBODIA
NATION RELIGION KING**



**TOURISM
STATISTICAL
REPORT**

MAY 2008

MINISTRY OF TOURISM

Statistics and Tourism Information Department

#3, Preah Monivong Blvd., Phnom Penh 12258, Kingdom of Cambodia.

Tel.: +855 23 211593 / Fax: +855 23 212837

Email: info@mot.gov.kh

Website: www.mot.gov.kh

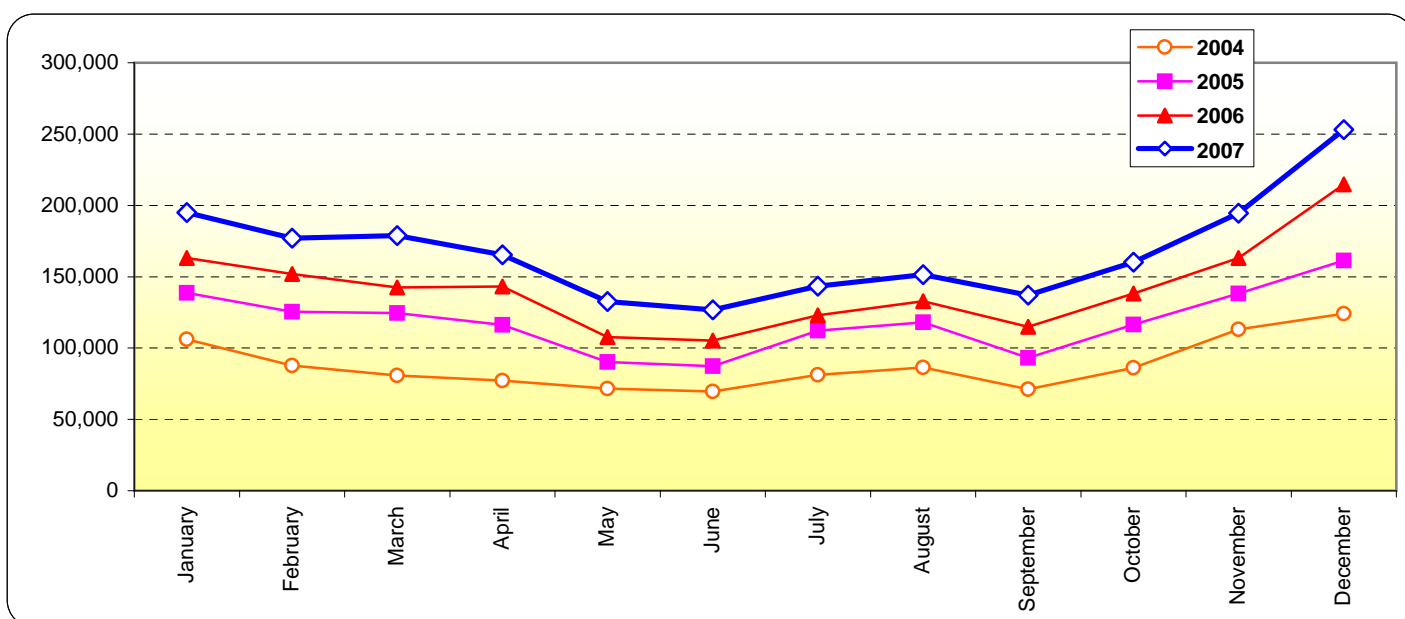
Tourism Highlights

Visitor Arrivals, Average Length of Stay, Hotels Occupancy and Tourism Receipts 1993 - 2007

Years	Visitor Arrivals		Average Length	Hotels Occupancy	Tourism Receipts
	number	change (%)	of Stay (days)	(%)	(million US\$)
1993	118,183	0.00	N/A	N/A	N/A
1994	176,617	49.44%	N/A	N/A	N/A
1995	219,680	24.38%	8.00	37.00	100
1996	260,489	18.58%	7.50	40.00	118
1997	218,843	-15.99%	6.40	30.00	103
1998	289,524	32.30%	5.20	40.00	166
1999	367,743	27.02%	5.50	44.00	190
2000	466,365	26.82%	5.50	45.00	228
2001	604,919	29.71%	5.50	48.00	304
2002	786,524	30.02%	5.80	50.00	379
2003	701,014	-10.87%	5.50	50.00	347
2004	1,055,202	50.53%	6.30	52.00	578
2005	1,421,615	34.72%	6.30	52.00	832
2006	1,700,041	19.59%	6.50	54.79	1,049
2007	2,015,128	18.53%	6.50	54.79	1,400

International visitor arrivals to Cambodia

Destination	Months	2004	2005	2006	2007	2008	change(%) 2008*/07
Cambodia	January	106,200	138,718	163,047	194,932	223,581	14.70%
<i>(all means of transportation, include same-day visitors)</i>	February	87,795	125,326	151,821	177,130	214,902	21.32%
	March	80,765	124,626	142,437	178,751	205,722	15.09%
	April	77,105	116,219	143,069	165,347	173,903	5.17%
	May	71,486	90,314	107,720	132,512	149,275	12.65%
	June	69,595	87,228	105,298	126,677		
	July	81,223	112,116	123,047	143,310		
	August	86,450	117,943	132,792	151,478		
	September	71,209	93,158	114,781	137,027		
	October	86,121	116,382	138,296	160,235		
	November	113,195	138,293	163,068	194,646		
	December	124,058	161,292	214,665	253,083		
	Total	1,055,202	1,421,615	1,700,041	2,015,128	967,383	14.00%



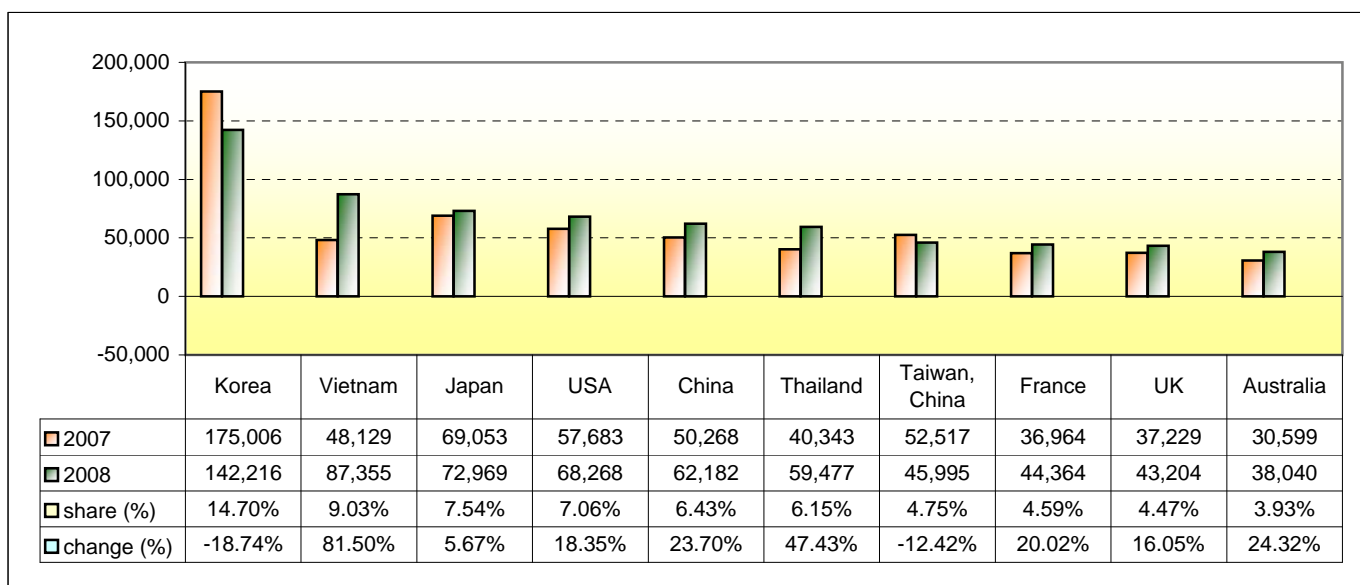
Executive Summary from January - May in 2008

I. Visitor arrivals to Cambodia from Jan - May was: **967,383**

II Mode of arrivals

	visitors	share (%)
- Air	589,392	60.93
Phnom Penh Int'l Airport	252,431	26.09
Siem Reap Int'l Airport	336,961	34.83
- Land and Water ways	340,123	35.16
Land	304,046	31.43
Boat	36,077	3.73
- Same-day visitors	37,868	3.91
Total	967,383	100.00

III. Top ten markets arrivals to Cambodia from Jan - May in 2008



IV. Visitor arrivals to Cambodia from Jan - May 2007 - 2008

Visitor arrivals			share (%)		change (%)
	2007	2008	2007	2008*	2008*/07
Air	562,652	589,392	66.30	60.93	4.75
Phnom Penh Int'l Airport	217,283	252,431	25.60	26.09	16.18
Siem Reap Int'l Airport	345,369	336,961	40.70	34.83	-2.43
Land and Water ways	247,126	340,123	29.12	35.16	37.63
Land	227,782	304,046	26.84	31.43	33.48
Boat	19,344	36,077	2.28	3.73	86.50
Sub-Total	809,778	929,515	95.42	96.09	14.79
Same-day visitors	38,894	37,868	4.58	3.91	-2.64
Total	848,672	967,383	100.00	100.00	14.0

V. Remark: Percentage share of visitor arrivals at destination from Jan - May 2008

Visitor arrivals			share (%)		change (%)
	2007	2008	2007	2008*	2008*/07
Phnom Penh & Other Destinations	294,799	447,441	34.74%	46.25%	51.78%
Siem Reap Province	553,873	519,942	65.26%	53.75%	-6.13%
Total	848,672	967,383	100.00%	100.00%	14.0%

Visitor Arrivals to Cambodia by Country of Residence from January - May in 2008

(by all means of transportation)

Regions Country of Residence	2007	2008			Total	Females	share (%) 2008*	change (%) 2008*/07
		Purpose of Visit						
		Holiday	Business	Others				
GRAND TOTAL	848,672	844,004	70,498	15,013	967,383	427,291	100.00%	13.99%
Asia and the Pacific	550,773	546,467	59,330	8,355	614,152	282,580	63.49%	11.51%
ASEAN	157,213	200,178	27,390	4,574	232,142	107,882	24.00%	47.66%
Brunei Darussalam	170	122	6	22	150	60	0.02%	-11.76%
Indonesia	3,124	2,348	1,467	158	3,973	1,461	0.41%	27.18%
Laos	6,385	16,454	57	167	16,678	10,838	1.72%	161.21%
Malaysia	32,960	30,377	2,081	106	32,564	11,304	3.37%	-1.20%
Myanmar	772	703	183	63	949	384	0.10%	22.93%
Philippines	11,590	13,212	2,051	458	15,721	9,208	1.63%	35.64%
Singapore	13,740	14,302	893	80	15,275	5,443	1.58%	11.17%
Thailand	40,343	51,827	6,513	1,137	59,477	24,575	6.15%	47.43%
Vietnam	48,129	70,833	14,139	2,383	87,355	44,609	9.03%	81.50%
Eastern Asia	348,130	294,290	28,063	2,381	324,734	153,183	33.57%	-6.72%
China	50,268	46,162	15,500	520	62,182	26,959	6.43%	23.70%
Hong Kong, China	1,223	1,143	187	0	1,330	489	0.14%	8.75%
Japan	69,053	69,677	2,178	1,114	72,969	35,486	7.54%	5.67%
Mongolia	63	34	2	6	42	29	0.00%	-33.33%
South Korea	175,006	134,995	6,508	713	142,216	68,412	14.70%	-18.74%
Taiwan, China	52,517	42,279	3,688	28	45,995	21,808	4.75%	-12.42%
Southern Asia	5,313	4,642	1,400	395	6,437	1,596	0.67%	21.16%
Afghanistan	15	6	0	13	19	4	0.00%	26.67%
Bangladesh	288	121	92	34	247	39	0.03%	-14.24%
India	4,251	3,924	1,081	221	5,226	1,312	0.54%	22.94%
Nepal	280	283	81	41	405	110	0.04%	44.64%
Pakistan	200	136	45	53	234	25	0.02%	17.00%
Sri Lanka	279	172	101	33	306	106	0.03%	9.68%
Oceania	35,389	40,332	2,403	948	43,683	19,390	4.52%	23.44%
Australia	30,599	35,159	2,072	809	38,040	17,045	3.93%	24.32%
New Zealand	4,790	5,173	331	139	5,643	2,345	0.58%	17.81%
Others Asia & the Pacific	4,728	7,025	74	57	7,156	529	0.74%	51.35%
Europe	174,236	201,333	7,091	4,062	212,486	84,027	21.97%	21.95%
Northern Europe	61,349	68,073	2,698	1,241	72,012	27,261	7.44%	17.38%
Denmark	4,072	4,426	112	111	4,649	1,829	0.48%	14.17%
Finland	2,832	3,229	125	93	3,447	1,217	0.36%	21.72%
Iceland	121	142	2	0	144	48	0.01%	19.01%
Ireland	3,555	4,264	129	66	4,459	1,799	0.46%	25.43%
Norway	3,275	4,081	109	49	4,239	1,634	0.44%	29.44%
Sweden	10,265	11,431	260	179	11,870	5,032	1.23%	15.64%
United Kingdom	37,229	40,500	1,961	743	43,204	15,702	4.47%	16.05%
Western Europe	84,808	94,951	3,631	2,282	100,864	41,913	10.43%	18.93%
Austria	3,420	3,774	38	24	3,836	1,586	0.40%	12.16%
Belgium	4,773	5,116	203	191	5,510	2,180	0.57%	15.44%
France	36,964	40,927	2,242	1,195	44,364	19,120	4.59%	20.02%
Germany	25,160	29,819	592	517	30,928	12,460	3.20%	22.93%
Luxembourg	152	218	4	8	230	89	0.02%	51.32%
Netherlands	8,235	8,384	337	218	8,939	3,621	0.92%	8.55%
Switzerland	6,104	6,713	215	129	7,057	2,857	0.73%	15.61%
Eastern Europe	9,640	14,738	322	158	15,218	7,137	1.57%	57.86%
Bulgaria	126	148	4	4	156	69	0.02%	23.81%
Czech	927	1,131	17	36	1,184	479	0.12%	27.72%
Hungary	1,324	1,334	36	21	1,391	636	0.14%	5.06%
Poland	1,711	2,620	24	20	2,664	1,278	0.28%	55.70%
Romania	172	188	9	6	203	118	0.02%	18.02%
Russia	4,491	8,142	181	50	8,373	4,001	0.87%	86.44%
Slovakia	181	299	10	16	325	138	0.03%	79.56%
Ukraine	708	876	41	5	922	418	0.10%	30.23%
Southern Europe	13,891	16,758	376	337	17,471	7,242	1.81%	25.77%
Croatia	95	180	2	10	192	91	0.02%	102.11%
Greece	561	585	11	9	605	233	0.06%	7.84%
Italy	7,393	9,288	153	127	9,568	3,707	0.99%	29.42%
Portugal	783	797	36	17	850	418	0.09%	8.56%
Slovenia	295	381	3	3	387	169	0.04%	31.19%
Spain	4,050	4,746	116	110	4,972	2,316	0.51%	22.77%
Turkey	714	781	55	61	897	308	0.09%	25.63%
Others Europe	4,548	6,813	64	44	6,921	474	0.72%	52.18%

Visitor Arrivals to Cambodia by Country of Residence from January - May in 2008

(by all means of transportation)

Regions Country of Residence	2007	2008			Total	Females	share	change
		Purpose of Visit					(%)	(%)
		Holiday	Business	Others			2008*	2008*/07
GRAND TOTAL	848,672	844,004	70,498	15,013	967,383	427,291	100.00%	13.99%
Americas	79,781	91,612	3,815	2,512	97,939	40,133	10.12%	22.76%
Argentina	475	813	22	11	846	364	0.09%	78.11%
Brazil	631	851	12	30	893	427	0.09%	41.52%
Canada	15,907	17,878	691	385	18,954	8,372	1.96%	19.16%
Chile	538	851	12	13	876	452	0.09%	62.83%
Colombia	206	209	1	20	230	97	0.02%	11.65%
Mexico	1,316	1,296	19	8	1,323	631	0.14%	0.53%
Peru	125	117	2	9	128	70	0.01%	2.40%
United States	57,683	63,262	3,005	2,001	68,268	29,265	7.06%	18.35%
Uruguay	232	106	3	1	110	68	0.01%	-52.59%
Others Americas	2,668	6,229	48	34	6,311	387	0.65%	136.54%
Africa	1,451	1,238	186	35	1,459	442	0.15%	0.55%
Cameroon	68	46	7	2	55	2	0.01%	-19.12%
Ghana	102	39	7	1	47	12	0.00%	-53.92%
Nigeria	264	284	87	8	379	30	0.04%	43.56%
Sudan	4	12	6	2	20	4	0.00%	400.00%
South Africa	726	764	68	8	840	348	0.09%	15.70%
Others Africa	287	93	11	14	118	46	0.01%	-58.89%
Middle East	3,537	3,354	76	49	3,479	1,348	0.36%	-1.64%
Egypt	44	49	2	3	54	17	0.01%	22.73%
Iran	173	81	4	3	88	27	0.01%	-49.13%
Israel	2,905	3,008	63	30	3,101	1,273	0.32%	6.75%
Kuwait	104	120	0	2	122	1	0.01%	17.31%
Palestine	0				0		0.00%	
Saudi Arabia	39	18	1	0	19	0	0.00%	-51.28%
United Arab Emirates	0				0		0.00%	
Others Middle East	272	78	6	11	95	30	0.01%	-65.07%
Same-day visitors	38,894				37,868	18,761	3.91%	-2.64%

Remark:

- Cambodian Overseas: 31,623
- Cambodian Residence:: 796,851

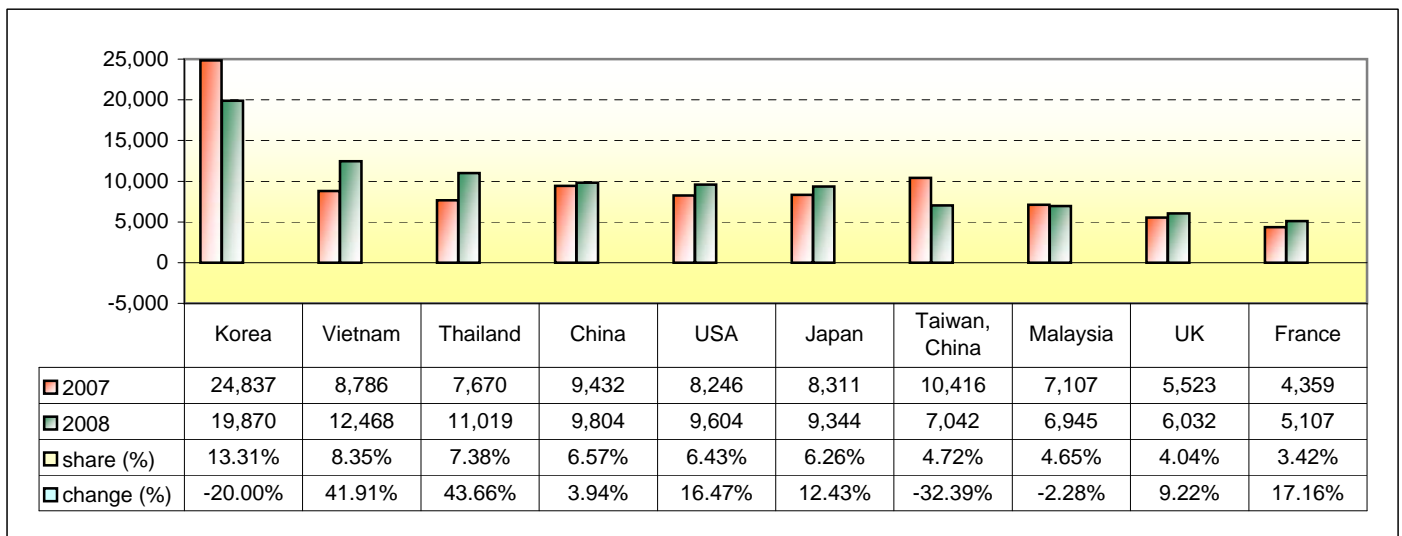
Executive Summary in May 2008

I. Visitor arrivals to Cambodia in May was: **149,275**

II. Mode of arrivals

	visitors	share (%)
- Air	86,064	57.65
Phnom Penh Int'l Airport	40,907	27.40
Siem Reap Int'l Airport	45,157	30.25
- Land and Water ways	57,907	38.79
Land	52,437	35.13
Boat	5,470	3.66
- Same-day visitors	5,304	3.55
Total	149,275	100.00

III. Top ten markets arrivals to Cambodia in May 2008



IV. Visitor arrivals to Cambodia in May 2007 - 2008

Visitor arrivals			share (%)		change (%)
	2007	2008	2007	2008*	2008*/07
Air	88,945	86,064	67.12	57.65	-3.24
Phnom Penh Int'l Airport	38,780	40,907	29.27	27.40	5.48
Siem Reap Int'l Airport	50,165	45,157	37.86	30.25	-9.98
Land and Water ways	36,851	57,907	27.81	38.79	57.14
Land	35,290	52,437	26.63	35.13	48.59
Boat	1,561	5,470	1.18	3.66	250.42
Sub-Total	125,796	143,971	94.93	96.45	14.45
Same-day visitors	6,716	5,304	5.07	3.55	-21.02
Total	132,512	149,275	100.00	100.00	12.65

V. Remark: Percentage share of visitor arrivals at destination in May 2008

Visitor arrivals			share (%)		change (%)
	2007	2008	2007	2008*	2008*/07
Phnom Penh & Other Destinations	64,220	76,828	48.46%	51.47%	19.63%
Siem Reap Province	68,292	72,447	51.54%	48.53%	6.08%
Total	132,512	149,275	100.00%	100.00%	12.65%

Visitor Arrivals to Cambodia by Country of Residence in May 2008

(by all means of transportation)

Regions Country of Residence	2007	2008			Total	Females	share	change
		Purpose of Visit					(%)	(%)
		Holiday	Business	Others			2008*	2008*/07
GRAND TOTAL	132,512	127,818	13,592	2,561	149,275	62,600	100.00%	12.65%
Asia and the Pacific	92,059	88,899	11,544	1,511	101,954	45,906	68.30%	10.75%
ASEAN	31,144	37,083	5,519	878	43,480	22,147	29.13%	39.61%
Brunei Darussalam	18	6	2	0	8	2	0.01%	-55.56%
Indonesia	650	480	262	22	764	278	0.51%	17.54%
Laos	1,370	3,950	13	11	3,974	2,688	2.66%	190.07%
Malaysia	7,107	6,510	411	24	6,945	2,422	4.65%	-2.28%
Myanmar	142	137	39	3	179	48	0.12%	26.06%
Philippines	2,401	3,612	429	91	4,132	2,419	2.77%	72.09%
Singapore	3,000	3,732	250	9	3,991	1,491	2.67%	33.03%
Thailand	7,670	9,630	1,150	239	11,019	4,775	7.38%	43.66%
Vietnam	8,786	9,026	2,963	479	12,468	8,024	8.35%	41.91%
Eastern Asia	53,270	40,749	5,217	406	46,372	20,011	31.06%	-12.95%
China	9,432	6,908	2,810	86	9,804	3,684	6.57%	3.94%
Hong Kong, China	262	259	47	0	306	114	0.20%	16.79%
Japan	8,311	8,795	366	183	9,344	4,237	6.26%	12.43%
Mongolia	12	6	0	0	6	3	0.00%	-50.00%
South Korea	24,837	18,474	1,263	133	19,870	8,860	13.31%	-20.00%
Taiwan, China	10,416	6,307	731	4	7,042	3,113	4.72%	-32.39%
Southern Asia	1,088	1,010	305	72	1,387	335	0.93%	27.48%
Afghanistan	1	0	0	0	0	0	0.00%	-100.00%
Bangladesh	32	23	25	6	54	4	0.04%	68.75%
India	877	841	222	45	1,108	276	0.74%	26.34%
Nepal	78	82	29	5	116	25	0.08%	48.72%
Pakistan	40	25	9	10	44	5	0.03%	10.00%
Sri Lanka	60	39	20	6	65	25	0.04%	8.33%
Oceania	5,098	7,076	493	146	7,715	3,348	5.17%	51.33%
Australia	4,340	6,229	416	119	6,764	2,979	4.53%	55.85%
New Zealand	758	847	77	27	951	369	0.64%	25.46%
Others Asia & the Pacific	1,459	2,981	10	9	3,000	65	2.01%	105.62%
Europe	20,524	24,069	1,218	617	25,904	8,749	17.35%	26.21%
Northern Europe	7,729	7,970	440	213	8,623	3,126	5.78%	11.57%
Denmark	331	454	14	18	486	169	0.33%	46.83%
Finland	228	233	10	20	263	90	0.18%	15.35%
Iceland	2	13	1	0	14	5	0.01%	600.00%
Ireland	613	782	27	12	821	353	0.55%	33.93%
Norway	308	281	14	13	308	119	0.21%	0.00%
Sweden	724	625	49	25	699	249	0.47%	-3.45%
United Kingdom	5,523	5,582	325	125	6,032	2,141	4.04%	9.22%
Western Europe	9,057	9,737	654	339	10,730	3,961	7.19%	18.47%
Austria	178	255	8	1	264	96	0.18%	48.31%
Belgium	477	543	30	32	605	197	0.41%	26.83%
France	4,359	4,566	402	139	5,107	1,963	3.42%	17.16%
Germany	2,277	2,614	110	98	2,822	1,012	1.89%	23.94%
Netherlands	1,042	1,163	68	46	1,277	471	0.86%	22.55%
Luxembourg	15	10	2	1	13	4	0.01%	-13.33%
Switzerland	709	586	34	22	642	218	0.43%	-9.45%
Eastern Europe	871	1,552	53	24	1,629	749	1.09%	87.03%
Bulgaria	11	19	1	0	20	6	0.01%	81.82%
Czech	62	99	3	10	112	37	0.08%	80.65%
Hungary	94	49	2	2	53	30	0.04%	-43.62%
Poland	117	180	7	2	189	79	0.13%	61.54%
Romania	22	21	0	0	21	13	0.01%	-4.55%
Russia	497	958	29	6	993	472	0.67%	99.80%
Slovakia	15	43	1	2	46	16	0.03%	206.67%
Ukraine	53	183	10	2	195	96	0.13%	267.92%
Southern Europe	1,417	2,003	62	35	2,100	862	1.41%	48.20%
Croatia	11	5	0	2	7	4	0.00%	-36.36%
Greece	80	57	1	1	59	26	0.04%	-26.25%
Italy	469	715	25	15	755	259	0.51%	60.98%
Portugal	128	114	7	4	125	51	0.08%	-2.34%
Slovenia	47	19	0	0	19	7	0.01%	-59.57%
Spain	634	1,029	18	12	1,059	499	0.71%	67.03%
Turkey	48	64	11	1	76	16	0.05%	58.33%
Others Europe	1,450	2,807	9	6	2,822	51	1.89%	94.62%

Visitor Arrivals to Cambodia by Country of Residence in May 2008

(by all means of transportation)

Regions Country of Residence	2007	2008			Total	Females	share	change
		Purpose of Visit					(%)	(%)
		Holiday	Business	Others			2008*	2008*/07
GRAND TOTAL	132,512	127,818	13,592	2,561	149,275	62,600	100.00%	12.65%
Americas	12,620	14,282	769	416	15,467	5,180	10.36%	22.56%
Argentina	67	107	0	1	108	53	0.07%	61.19%
Brazil	149	165	3	2	170	82	0.11%	14.09%
Canada	2,198	2,415	136	55	2,606	1,070	1.75%	18.56%
Chile	124	103	0	1	104	53	0.07%	-16.13%
Colombia	26	32	0	1	33	13	0.02%	26.92%
Mexico	231	194	4	0	198	102	0.13%	-14.29%
Peru	24	22	2	1	25	11	0.02%	4.17%
United States	8,246	8,642	614	348	9,604	3,703	6.43%	16.47%
Uruguay	126	91	2	1	94	61	0.06%	-25.40%
Others Americas	1,429	2,511	8	6	2,525	32	1.69%	76.70%
Africa	233	230	40	7	277	61	0.19%	18.88%
Cameroon	9	13	3	0	16	0	0.01%	77.78%
Ghana	8	10	3	0	13	7	0.01%	62.50%
Nigeria	44	86	13	3	102	7	0.07%	131.82%
Sudan	0	11	4	0	15	3	0.01%	#DIV/0!
South Africa	141	98	13	2	113	34	0.08%	-19.86%
Others Africa	31	12	4	2	18	10	0.01%	-41.94%
Middle East	360	338	21	10	369	102	0.25%	2.50%
Egypt	7	14	2	0	16	2	0.01%	128.57%
Iran	27	10	0	2	12	5	0.01%	-55.56%
Israel	248	281	15	6	302	87	0.20%	21.77%
Kuwait	22	23	0	0	23	1	0.02%	4.55%
Palestine	0				0		0.00%	
Saudi Arabia	31	1	1	0	2	0	0.00%	-93.55%
United Arab Emirates	0				0		0.00%	
Others Middle East	25	9	3	2	14	7	0.01%	-44.00%
Same-day visitors	6,716				5,304	2,602	3.55%	-21.02%

Remark:

- Cambodian Overseas: 8,309
- Cambodian Residence:: 26,795

COMPILED BY:

1. Mr. Kong Sopheareak

Director
Statistics & Tourism Information Department
Tel.: +855 23 211593
E-mail: kong@mot.gov.kh

2. Mr. Horth Vanny

Chief of Tourism Statistics Office
Compile and data analysis
Tel.: +855 12 827664