



**KINGDOM OF CAMBODIA  
NATION RELIGION KING**



**TOURISM  
STATISTICAL  
REPORT**

**JUNE 2008**

**MINISTRY OF TOURISM**

Statistics and Tourism Information Department

#3, Preah Monivong Blvd., Phnom Penh 12258, Kingdom of Cambodia.

Tel.: +855 23 211593 / Fax: +855 23 212837

Email: [info@mot.gov.kh](mailto:info@mot.gov.kh)

Website: [www.mot.gov.kh](http://www.mot.gov.kh)

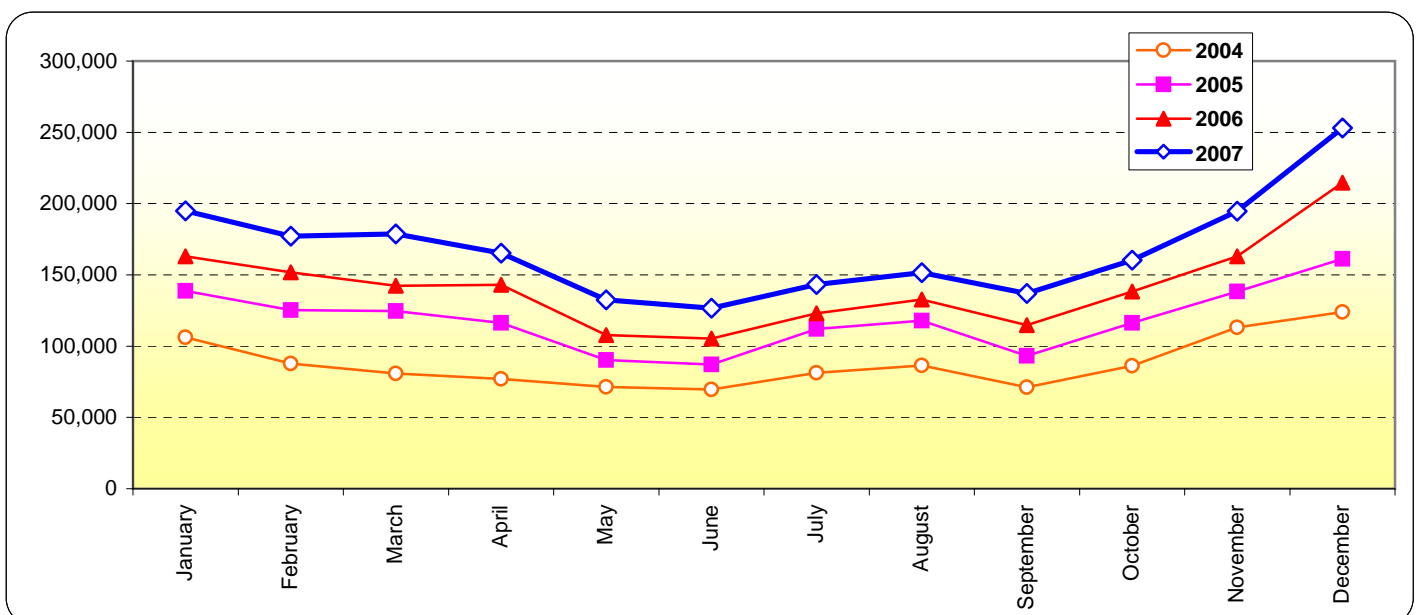
## Tourism Highlights

### Visitor Arrivals, Average Length of Stay, Hotels Occupancy and Tourism Receipts 1993 - 2007

Years	Visitor Arrivals		Average Length of Stay (days)	Hotels Occupancy (%)	Tourism Receipts (million US\$)
	number	change (%)			
1993	118,183	0.00	N/A	N/A	N/A
1994	176,617	49.44%	N/A	N/A	N/A
1995	219,680	24.38%	8.00	37.00	100
1996	260,489	18.58%	7.50	40.00	118
1997	218,843	-15.99%	6.40	30.00	103
1998	289,524	32.30%	5.20	40.00	166
1999	367,743	27.02%	5.50	44.00	190
2000	466,365	26.82%	5.50	45.00	228
2001	604,919	29.71%	5.50	48.00	304
2002	786,524	30.02%	5.80	50.00	379
2003	701,014	-10.87%	5.50	50.00	347
2004	1,055,202	50.53%	6.30	52.00	578
2005	1,421,615	34.72%	6.30	52.00	832
2006	1,700,041	19.59%	6.50	54.79	1,049
2007	2,015,128	18.53%	6.50	54.79	1,400

### International visitor arrivals to Cambodia

Destination	Months	2004	2005	2006	2007	2008	change(%) 2008*/07
<b>Cambodia</b>	January	106,200	138,718	163,047	194,932	223,581	14.70%
<i>(all means of transportation, include same-day visitors)</i>	February	87,795	125,326	151,821	177,130	214,902	21.32%
	March	80,765	124,626	142,437	178,751	205,722	15.09%
	April	77,105	116,219	143,069	165,347	173,903	5.17%
	May	71,486	90,314	107,720	132,512	149,275	12.65%
	June	69,595	87,228	105,298	126,677	130,853	3.30%
	July	81,223	112,116	123,047	143,310		
	August	86,450	117,943	132,792	151,478		
	September	71,209	93,158	114,781	137,027		
	October	86,121	116,382	138,296	160,235		
	November	113,195	138,293	163,068	194,646		
	December	124,058	161,292	214,665	253,083		
	<b>Total</b>	<b>1,055,202</b>	<b>1,421,615</b>	<b>1,700,041</b>	<b>2,015,128</b>	<b>1,098,236</b>	<b>13.0%</b>



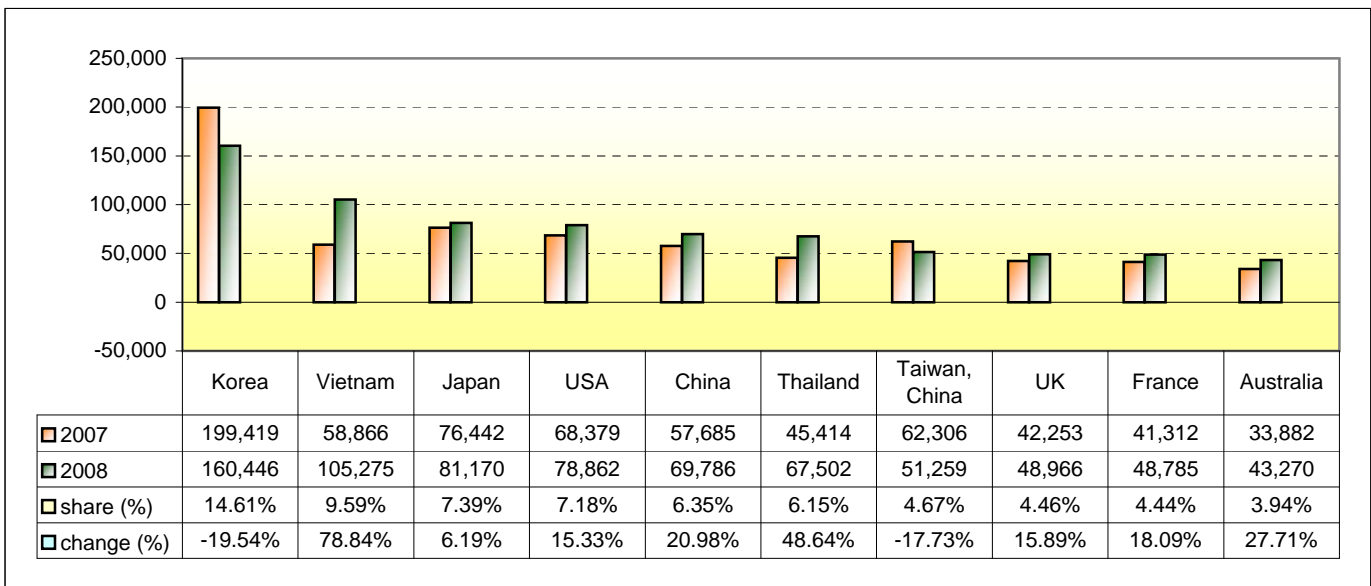
## Executive Summary in the First Semester of 2008

I. Visitor arrivals to Cambodia from Jan - Jun was: **1,098,236**

### II Mode of arrivals

	visitors	share (%)
<b>- Air</b>	<b>664,048</b>	<b>60.46</b>
Phnom Penh Int'l Airport	293,092	26.69
Siem Reap Int'l Airport	370,956	33.78
<b>- Land and Water ways</b>	<b>391,666</b>	<b>35.66</b>
Land	353,317	32.17
Boat	38,349	3.49
- Same-day visitors	42,522	3.87
<b>Total</b>	<b>1,098,236</b>	<b>100.00</b>

### III. Top ten markets arrivals to Cambodia from Jan - Jun in 2008



### IV. Visitor arrivals to Cambodia from Jan - Jun 2007 - 2008

Visitor arrivals			share (%)		change (%)
	2007	2008	2007	2008*	2008*/07
<b>Air</b>	<b>649,219</b>	<b>664,048</b>	<b>66.56</b>	<b>60.46</b>	<b>2.28</b>
Phnom Penh Int'l Airport	256,552	293,092	26.30	26.69	14.24
Siem Reap Int'l Airport	392,667	370,956	40.26	33.78	-5.53
<b>Land and Water ways</b>	<b>283,207</b>	<b>391,666</b>	<b>29.04</b>	<b>35.66</b>	<b>38.30</b>
Land	262,420	353,317	26.91	32.17	34.64
Boat	20,787	38,349	2.13	3.49	84.49
<b>Sub-Total</b>	<b>932,426</b>	<b>1,055,714</b>	<b>95.60</b>	<b>96.13</b>	<b>13.22</b>
Same-day visitors	42,923	42,522	4.40	3.87	-0.93
<b>Total</b>	<b>975,349</b>	<b>1,098,236</b>	<b>100.00</b>	<b>100.00</b>	<b>12.6</b>

### V. Remark: Percentage share of visitor arrivals at destination from Jan - Jun 2008

Visitor arrivals			share (%)		change (%)
	2007	2008	2007	2008*	2008*/07
Phnom Penh & Other Destinations	359,903	519,442	36.90%	47.30%	44.33%
Siem Reap Province	615,446	578,794	63.10%	52.70%	-5.96%
<b>Total</b>	<b>975,349</b>	<b>1,098,236</b>	<b>100.00%</b>	<b>100.00%</b>	<b>12.6%</b>

## Visitor Arrivals to Cambodia by Country of Residence in the First Semester of 2008

(by all means of transportation)

Regions Country of Residence	2007	2008				Total	Females	share (%) 2008*	change (%) 2008*/07
		Purpose of Visit			Others				
		Holiday	Business						
<b>GRAND TOTAL</b>	<b>975,349</b>	<b>955,241</b>	<b>83,060</b>	<b>17,413</b>	<b>1,098,236</b>	<b>481,988</b>	<b>100.00%</b>	<b>12.60%</b>	
<b>Asia and the Pacific</b>	<b>638,183</b>	<b>627,228</b>	<b>69,931</b>	<b>9,667</b>	<b>706,826</b>	<b>322,188</b>	<b>64.36%</b>	<b>10.76%</b>	
<b>ASEAN</b>	<b>188,167</b>	<b>239,624</b>	<b>32,421</b>	<b>5,287</b>	<b>277,332</b>	<b>127,909</b>	<b>25.25%</b>	<b>47.39%</b>	
Brunei Darussalam	188	137	7	28	172	72	0.02%	-8.51%	
Indonesia	3,700	2,752	1,725	175	4,652	1,691	0.42%	25.73%	
Laos	8,174	21,520	60	203	21,783	14,236	1.98%	166.49%	
Malaysia	40,140	36,399	2,434	124	38,957	13,424	3.55%	-2.95%	
Myanmar	886	847	222	79	1,148	464	0.10%	29.57%	
Philippines	13,886	16,075	2,381	526	18,982	11,080	1.73%	36.70%	
Singapore	16,913	17,751	1,017	93	18,861	6,805	1.72%	11.52%	
Thailand	45,414	58,532	7,637	1,333	67,502	27,188	6.15%	48.64%	
Vietnam	58,866	85,611	16,938	2,726	105,275	52,949	9.59%	78.84%	
<b>Eastern Asia</b>	<b>397,314</b>	<b>328,915</b>	<b>32,726</b>	<b>2,717</b>	<b>364,358</b>	<b>169,927</b>	<b>33.18%</b>	<b>-8.29%</b>	
China	57,685	51,273	17,940	573	69,786	29,840	6.35%	20.98%	
Hong Kong, China	1,379	1,398	219	0	1,617	598	0.15%	17.26%	
Japan	76,442	77,312	2,584	1,274	81,170	39,059	7.39%	6.19%	
Mongolia	83	57	6	7	70	40	0.01%	-15.66%	
South Korea	199,419	151,866	7,749	831	160,446	76,419	14.61%	-19.54%	
Taiwan, China	62,306	47,009	4,228	32	51,269	23,971	4.67%	-17.71%	
<b>Southern Asia</b>	<b>6,377</b>	<b>5,633</b>	<b>1,763</b>	<b>486</b>	<b>7,882</b>	<b>1,955</b>	<b>0.72%</b>	<b>23.60%</b>	
Afghanistan	17	7	0	13	20	4	0.00%	17.65%	
Bangladesh	337	162	103	42	307	46	0.03%	-8.90%	
India	5,098	4,751	1,395	291	6,437	1,635	0.59%	26.27%	
Nepal	329	350	97	41	488	121	0.04%	48.33%	
Pakistan	249	165	55	63	283	29	0.03%	13.65%	
Sri Lanka	347	198	113	36	347	120	0.03%	0.00%	
<b>Oceania</b>	<b>39,530</b>	<b>45,831</b>	<b>2,936</b>	<b>1,111</b>	<b>49,878</b>	<b>21,845</b>	<b>4.54%</b>	<b>26.18%</b>	
Australia	33,882	39,790	2,535	945	43,270	19,135	3.94%	27.71%	
New Zealand	5,648	6,041	401	166	6,608	2,710	0.60%	17.00%	
Others Asia & the Pacific	6,795	7,225	85	66	7,376	552	0.67%	8.55%	
<b>Europe</b>	<b>193,724</b>	<b>219,219</b>	<b>8,250</b>	<b>4,650</b>	<b>232,119</b>	<b>91,172</b>	<b>21.14%</b>	<b>19.82%</b>	
<b>Northern Europe</b>	<b>68,618</b>	<b>75,763</b>	<b>3,115</b>	<b>1,422</b>	<b>80,300</b>	<b>30,244</b>	<b>7.31%</b>	<b>17.02%</b>	
Denmark	4,435	4,822	124	124	5,070	1,964	0.46%	14.32%	
Finland	3,038	3,460	135	118	3,713	1,314	0.34%	22.22%	
Iceland	127	151	2	0	153	52	0.01%	20.47%	
Ireland	4,313	4,997	151	75	5,223	2,136	0.48%	21.10%	
Norway	3,577	4,485	127	58	4,670	1,800	0.43%	30.56%	
Sweden	10,875	12,017	288	200	12,505	5,264	1.14%	14.99%	
United Kingdom	42,253	45,831	2,288	847	48,966	17,714	4.46%	15.89%	
<b>Western Europe</b>	<b>92,940</b>	<b>102,511</b>	<b>4,264</b>	<b>2,618</b>	<b>109,393</b>	<b>44,970</b>	<b>9.96%</b>	<b>17.70%</b>	
Austria	3,629	3,918	43	26	3,987	1,639	0.36%	9.86%	
Belgium	5,273	5,577	236	233	6,046	2,358	0.55%	14.66%	
France	41,312	44,753	2,651	1,381	48,785	20,777	4.44%	18.09%	
Germany	26,896	31,435	700	587	32,722	13,077	2.98%	21.66%	
Luxembourg	158	233	4	8	245	92	0.02%	55.06%	
Netherlands	9,100	9,403	382	236	10,021	3,995	0.91%	10.12%	
Switzerland	6,572	7,192	248	147	7,587	3,032	0.69%	15.44%	
<b>Eastern Europe</b>	<b>10,279</b>	<b>15,631</b>	<b>365</b>	<b>176</b>	<b>16,172</b>	<b>7,566</b>	<b>1.47%</b>	<b>57.33%</b>	
Bulgaria	133	183	7	5	195	80	0.02%	46.62%	
Czech	977	1,181	17	38	1,236	500	0.11%	26.51%	
Hungary	1,395	1,383	37	23	1,443	656	0.13%	3.44%	
Poland	1,805	2,729	27	24	2,780	1,329	0.25%	54.02%	
Romania	191	202	9	6	217	126	0.02%	13.61%	
Russia	4,845	8,729	214	56	8,999	4,297	0.82%	85.74%	
Slovakia	200	329	12	19	360	149	0.03%	80.00%	
Ukraine	733	895	42	5	942	429	0.09%	28.51%	
<b>Southern Europe</b>	<b>15,274</b>	<b>18,376</b>	<b>433</b>	<b>383</b>	<b>19,192</b>	<b>7,899</b>	<b>1.75%</b>	<b>25.65%</b>	
Croatia	102	187	3	11	201	94	0.02%	97.06%	
Greece	581	616	13	12	641	245	0.06%	10.33%	
Italy	7,930	9,762	172	147	10,081	3,856	0.92%	27.12%	
Portugal	903	986	39	21	1,046	498	0.10%	15.84%	
Slovenia	310	421	6	3	430	188	0.04%	38.71%	
Spain	4,644	5,535	135	122	5,792	2,679	0.53%	24.72%	
Turkey	804	869	65	67	1,001	339	0.09%	24.50%	
Others Europe	6,613	6,938	73	51	7,062	493	0.64%	6.79%	

## Visitor Arrivals to Cambodia by Country of Residence in the First Semester of 2008

(by all means of transportation)

Regions Country of Residence	2007	2008			Total	Females	share	change
		Purpose of Visit					(%)	(%)
		Holiday	Business	Others			2008*	2008*/07
<b>GRAND TOTAL</b>	<b>975,349</b>	<b>955,241</b>	<b>83,060</b>	<b>17,413</b>	<b>1,098,236</b>	<b>481,988</b>	<b>100.00%</b>	<b>12.60%</b>
<b>Americas</b>	<b>95,013</b>	<b>103,656</b>	<b>4,576</b>	<b>3,000</b>	<b>111,232</b>	<b>45,615</b>	<b>10.13%</b>	<b>17.07%</b>
Argentina	605	884	22	12	918	404	0.08%	51.74%
Brazil	736	952	19	32	1,003	474	0.09%	36.28%
Canada	17,675	19,621	792	465	20,878	9,170	1.90%	18.12%
Chile	642	924	12	13	949	494	0.09%	47.82%
Colombia	244	283	1	21	305	133	0.03%	25.00%
Mexico	1,615	1,580	26	10	1,616	778	0.15%	0.06%
Peru	148	142	2	12	156	81	0.01%	5.41%
United States	68,379	72,824	3,643	2,395	78,862	33,607	7.18%	15.33%
Uruguay	241	112	3	1	116	72	0.01%	-51.87%
Others Americas	4,728	6,334	56	39	6,429	402	0.59%	35.98%
<b>Africa</b>	<b>1,703</b>	<b>1,522</b>	<b>214</b>	<b>42</b>	<b>1,778</b>	<b>536</b>	<b>0.16%</b>	<b>4.40%</b>
Cameroon	78	120	7	3	130	38	0.01%	66.67%
Ghana	115	40	8	1	49	12	0.00%	-57.39%
Nigeria	325	369	99	10	478	34	0.04%	47.08%
Sudan	4	12	6	2	20	4	0.00%	400.00%
South Africa	857	883	80	9	972	396	0.09%	13.42%
Others Africa	324	98	14	17	129	52	0.01%	-60.19%
<b>Middle East</b>	<b>3,803</b>	<b>3,616</b>	<b>89</b>	<b>54</b>	<b>3,759</b>	<b>1,415</b>	<b>0.34%</b>	<b>-1.16%</b>
Egypt	51	58	2	3	63	17	0.01%	23.53%
Iran	196	100	6	5	111	31	0.01%	-43.37%
Israel	3,095	3,201	72	31	3,304	1,331	0.30%	6.75%
Kuwait	120	152	0	2	154	2	0.01%	28.33%
Palestine	0				0		0.00%	
Saudi Arabia	40	24	2	0	26	0	0.00%	-35.00%
United Arab Emirates	0				0		0.00%	
Others Middle East	301	81	7	13	101	34	0.01%	-66.45%
Same-day visitors	42,923				42,522	21,062	3.87%	-0.93%

### Remark:

- Cambodian Overseas: 37,469
- Cambodian Residence:: 816,504

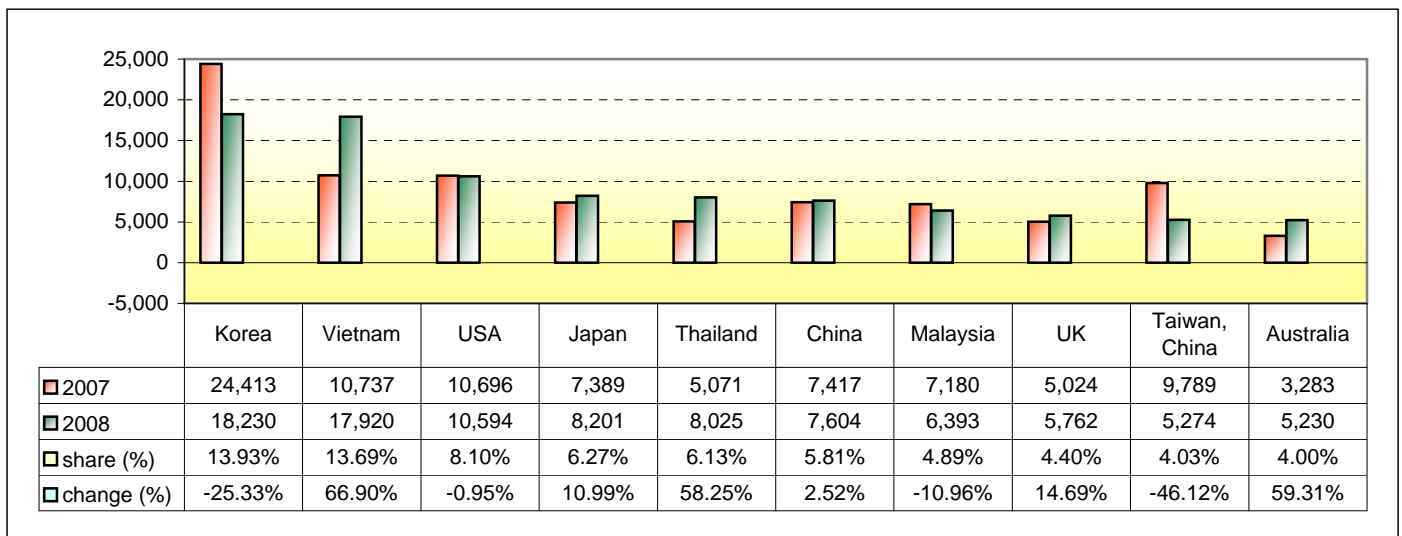
## Executive Summary in June 2008

I. Visitor arrivals to Cambodia in June was: **130,853**

### II. Mode of arrivals

	visitors	share (%)
<b>- Air</b>	<b>74,656</b>	<b>57.05</b>
Phnom Penh Int'l Airport	40,661	31.07
Siem Reap Int'l Airport	33,995	25.98
<b>- Land and Water ways</b>	<b>51,543</b>	<b>39.39</b>
Land	49,271	37.65
Boat	2,272	1.74
- Same-day visitors	4,654	3.56
<b>Total</b>	<b>130,853</b>	<b>100.00</b>

### III. Top ten markets arrivals to Cambodia in June 2008



### IV. Visitor arrivals to Cambodia in June 2007 - 2008

Visitor arrivals			share (%)		change (%)
	2007	2008	2007	2008*	2008*/07
<b>Air</b>	<b>86,567</b>	<b>74,656</b>	<b>68.34</b>	<b>57.05</b>	<b>-13.76</b>
Phnom Penh Int'l Airport	39,269	40,661	31.00	31.07	3.54
Siem Reap Int'l Airport	47,298	33,995	37.34	25.98	-28.13
<b>Land and Water ways</b>	<b>36,081</b>	<b>51,543</b>	<b>28.48</b>	<b>39.39</b>	<b>42.85</b>
Land	34,638	49,271	27.34	37.65	42.25
Boat	1,443	2,272	1.14	1.74	57.45
<b>Sub-Total</b>	<b>122,648</b>	<b>126,199</b>	<b>96.82</b>	<b>96.44</b>	<b>2.90</b>
Same-day visitors	4,029	4,654	3.18	3.56	15.51
<b>Total</b>	<b>126,677</b>	<b>130,853</b>	<b>100.00</b>	<b>100.00</b>	<b>3.30</b>

### V. Remark: Percentage share of visitor arrivals at destination in June 2008

Visitor arrivals			share (%)		change (%)
	2007	2008	2007	2008*	2008*/07
Phnom Penh & Other Destinations	65,104	72,001	51.39%	55.02%	10.59%
Siem Reap Province	61,573	58,852	48.61%	44.98%	-4.42%
<b>Total</b>	<b>126,677</b>	<b>130,853</b>	<b>100.00%</b>	<b>100.00%</b>	<b>3.30%</b>

## Visitor Arrivals to Cambodia by Country of Residence in June 2008

(by all means of transportation)

Regions Country of Residence	2007	2008			Total	Females	share	change
		Purpose of Visit					(%)	(%)
		Holiday	Business	Others			2008*	2008*/07
<b>GRAND TOTAL</b>	<b>126,677</b>	<b>111,237</b>	<b>12,562</b>	<b>2,400</b>	<b>130,853</b>	<b>54,697</b>	<b>100.00%</b>	<b>3.30%</b>
<b>Asia and the Pacific</b>	<b>87,410</b>	<b>80,761</b>	<b>10,601</b>	<b>1,312</b>	<b>92,674</b>	<b>39,608</b>	<b>70.82%</b>	<b>6.02%</b>
<b>ASEAN</b>	<b>30,954</b>	<b>39,446</b>	<b>5,031</b>	<b>713</b>	<b>45,190</b>	<b>20,027</b>	<b>34.53%</b>	<b>45.99%</b>
Brunei Darussalam	18	15	1	6	22	12	0.02%	22.22%
Indonesia	576	404	258	17	679	230	0.52%	17.88%
Laos	1,789	5,066	3	36	5,105	3,398	3.90%	185.35%
Malaysia	7,180	6,022	353	18	6,393	2,120	4.89%	-10.96%
Myanmar	114	144	39	16	199	80	0.15%	74.56%
Philippines	2,296	2,863	330	68	3,261	1,872	2.49%	42.03%
Singapore	3,173	3,449	124	13	3,586	1,362	2.74%	13.02%
Thailand	5,071	6,705	1,124	196	8,025	2,613	6.13%	58.25%
Vietnam	10,737	14,778	2,799	343	17,920	8,340	13.69%	66.90%
<b>Eastern Asia</b>	<b>49,184</b>	<b>34,625</b>	<b>4,663</b>	<b>336</b>	<b>39,624</b>	<b>16,744</b>	<b>30.28%</b>	<b>-19.44%</b>
China	7,417	5,111	2,440	53	7,604	2,881	5.81%	2.52%
Hong Kong, China	156	255	32	0	287	109	0.22%	83.97%
Japan	7,389	7,635	406	160	8,201	3,573	6.27%	10.99%
Mongolia	20	23	4	1	28	11	0.02%	40.00%
South Korea	24,413	16,871	1,241	118	18,230	8,007	13.93%	-25.33%
Taiwan, China	9,789	4,730	540	4	5,274	2,163	4.03%	-46.12%
<b>Southern Asia</b>	<b>1,064</b>	<b>991</b>	<b>363</b>	<b>91</b>	<b>1,445</b>	<b>359</b>	<b>1.10%</b>	<b>35.81%</b>
Afghanistan	2	1	0	0	1	0	0.00%	-50.00%
Bangladesh	49	41	11	8	60	7	0.05%	22.45%
India	847	827	314	70	1,211	323	0.93%	42.98%
Nepal	49	67	16	0	83	11	0.06%	69.39%
Pakistan	49	29	10	10	49	4	0.04%	0.00%
Sri Lanka	68	26	12	3	41	14	0.03%	-39.71%
<b>Oceania</b>	<b>4,141</b>	<b>5,499</b>	<b>533</b>	<b>163</b>	<b>6,195</b>	<b>2,455</b>	<b>4.73%</b>	<b>49.60%</b>
Australia	3,283	4,631	463	136	5,230	2,090	4.00%	59.31%
New Zealand	858	868	70	27	965	365	0.74%	12.47%
Others Asia & the Pacific	2,067	200	11	9	220	23	0.17%	-89.36%
<b>Europe</b>	<b>19,488</b>	<b>17,886</b>	<b>1,159</b>	<b>588</b>	<b>19,633</b>	<b>7,145</b>	<b>15.00%</b>	<b>0.74%</b>
<b>Northern Europe</b>	<b>7,269</b>	<b>7,690</b>	<b>417</b>	<b>181</b>	<b>8,288</b>	<b>2,983</b>	<b>6.33%</b>	<b>14.02%</b>
Denmark	206	396	12	13	421	135	0.32%	104.37%
Finland	363	231	10	25	266	97	0.20%	-26.72%
Iceland	6	9	0	0	9	4	0.01%	50.00%
Ireland	758	733	22	9	764	337	0.58%	0.79%
Norway	302	404	18	9	431	166	0.33%	42.72%
Sweden	610	586	28	21	635	232	0.49%	4.10%
United Kingdom	5,024	5,331	327	104	5,762	2,012	4.40%	14.69%
<b>Western Europe</b>	<b>8,132</b>	<b>7,560</b>	<b>633</b>	<b>336</b>	<b>8,529</b>	<b>3,057</b>	<b>6.52%</b>	<b>4.88%</b>
Austria	209	144	5	2	151	53	0.12%	-27.75%
Belgium	500	461	33	42	536	178	0.41%	7.20%
France	4,348	3,826	409	186	4,421	1,657	3.38%	1.68%
Germany	1,736	1,616	108	70	1,794	617	1.37%	3.34%
Luxembourg	6	15	0	0	15	3	0.01%	150.00%
Netherlands	865	1,019	45	18	1,082	374	0.83%	25.09%
Switzerland	468	479	33	18	530	175	0.41%	13.25%
<b>Eastern Europe</b>	<b>639</b>	<b>893</b>	<b>43</b>	<b>18</b>	<b>954</b>	<b>429</b>	<b>0.73%</b>	<b>49.30%</b>
Bulgaria	7	35	3	1	39	11	0.03%	457.14%
Czech	50	50	0	2	52	21	0.04%	4.00%
Hungary	71	49	1	2	52	20	0.04%	-26.76%
Poland	94	109	3	4	116	51	0.09%	23.40%
Romania	19	14	0	0	14	8	0.01%	-26.32%
Russia	354	587	33	6	626	296	0.48%	76.84%
Slovakia	19	30	2	3	35	11	0.03%	84.21%
Ukraine	25	19	1	0	20	11	0.02%	-20.00%
<b>Southern Europe</b>	<b>1,383</b>	<b>1,618</b>	<b>57</b>	<b>46</b>	<b>1,721</b>	<b>657</b>	<b>1.32%</b>	<b>24.44%</b>
Croatia	7	7	1	1	9	3	0.01%	28.57%
Greece	20	31	2	3	36	12	0.03%	80.00%
Italy	537	474	19	20	513	149	0.39%	-4.47%
Portugal	120	189	3	4	196	80	0.15%	63.33%
Slovenia	15	40	3	0	43	19	0.03%	186.67%
Spain	594	789	19	12	820	363	0.63%	38.05%
Turkey	90	88	10	6	104	31	0.08%	15.56%
Others Europe	2,065	125	9	7	141	19	0.11%	-93.17%

## Visitor Arrivals to Cambodia by Country of Residence in June 2008

(by all means of transportation)

Regions Country of Residence	2007	2008			Total	Females	share	change
		Purpose of Visit					(%)	(%)
		Holiday	Business	Others			2008*	2008*/07
<b>GRAND TOTAL</b>	<b>126,677</b>	<b>111,237</b>	<b>12,562</b>	<b>2,400</b>	<b>130,853</b>	<b>54,697</b>	<b>100.00%</b>	<b>3.30%</b>
<b>Americas</b>	<b>15,232</b>	<b>12,044</b>	<b>761</b>	<b>488</b>	<b>13,293</b>	<b>5,482</b>	<b>10.16%</b>	<b>-12.73%</b>
Argentina	130	71	0	1	72	40	0.06%	-44.62%
Brazil	105	101	7	2	110	47	0.08%	4.76%
Canada	1,768	1,743	101	80	1,924	798	1.47%	8.82%
Chile	104	73	0	0	73	42	0.06%	-29.81%
Colombia	38	74	0	1	75	36	0.06%	97.37%
Mexico	299	284	7	2	293	147	0.22%	-2.01%
Peru	23	25	0	3	28	11	0.02%	21.74%
United States	10,696	9,562	638	394	10,594	4,342	8.10%	-0.95%
Uruguay	9	6	0	0	6	4	0.00%	-33.33%
Others Americas	2,060	105	8	5	118	15	0.09%	-94.27%
<b>Africa</b>	<b>252</b>	<b>284</b>	<b>28</b>	<b>7</b>	<b>319</b>	<b>94</b>	<b>0.24%</b>	<b>26.59%</b>
Cameroon	10	74	0	1	75	36	0.06%	650.00%
Ghana	13	1	1	0	2	0	0.00%	-84.62%
Nigeria	61	85	12	2	99	4	0.08%	62.30%
Sudan	0	0	0	0	0	0	0.00%	
South Africa	131	119	12	1	132	48	0.10%	0.76%
Others Africa	37	5	3	3	11	6	0.01%	-70.27%
<b>Middle East</b>	<b>266</b>	<b>262</b>	<b>13</b>	<b>5</b>	<b>280</b>	<b>67</b>	<b>0.21%</b>	<b>5.26%</b>
Egypt	7	9	0	0	9	0	0.01%	28.57%
Iran	23	19	2	2	23	4	0.02%	0.00%
Israel	190	193	9	1	203	58	0.16%	6.84%
Kuwait	16	32	0	0	32	1	0.02%	100.00%
Palestine	0				0		0.00%	
Saudi Arabia	1	6	1	0	7	0	0.01%	600.00%
United Arab Emirates	0				0		0.00%	
Others Middle East	29	3	1	2	6	4	0.00%	-79.31%
Same-day visitors	<b>4,029</b>				<b>4,654</b>	<b>2,301</b>	<b>3.56%</b>	<b>15.51%</b>

Remark:

- Cambodian Overseas: 5,846
- Cambodian Residence:: 19,653

**COMPILED BY:**

1. Mr. Kong Sopheareak

Director  
Statistics & Tourism Information Department  
Tel.: +855 23 211593  
E-mail: kong@mot.gov.kh

2. Mr. Horth Vanny

Chief of Tourism Statistics Office  
Compile and data analysis  
Tel.: +855 12 827664