



**KINGDOM OF CAMBODIA  
NATION RELIGION KING**



# **TOURISM STATISTICAL REPORT**

## **AUGUST 2008**

**MINISTRY OF TOURISM**

Statistics and Tourism Information Department

#3, Preah Monivong Blvd., Phnom Penh 12258, Kingdom of Cambodia.

Tel.: +855 23 211593 / Fax: +855 23 212837

Email: [info@mot.gov.kh](mailto:info@mot.gov.kh)

Website: [www.mot.gov.kh](http://www.mot.gov.kh)

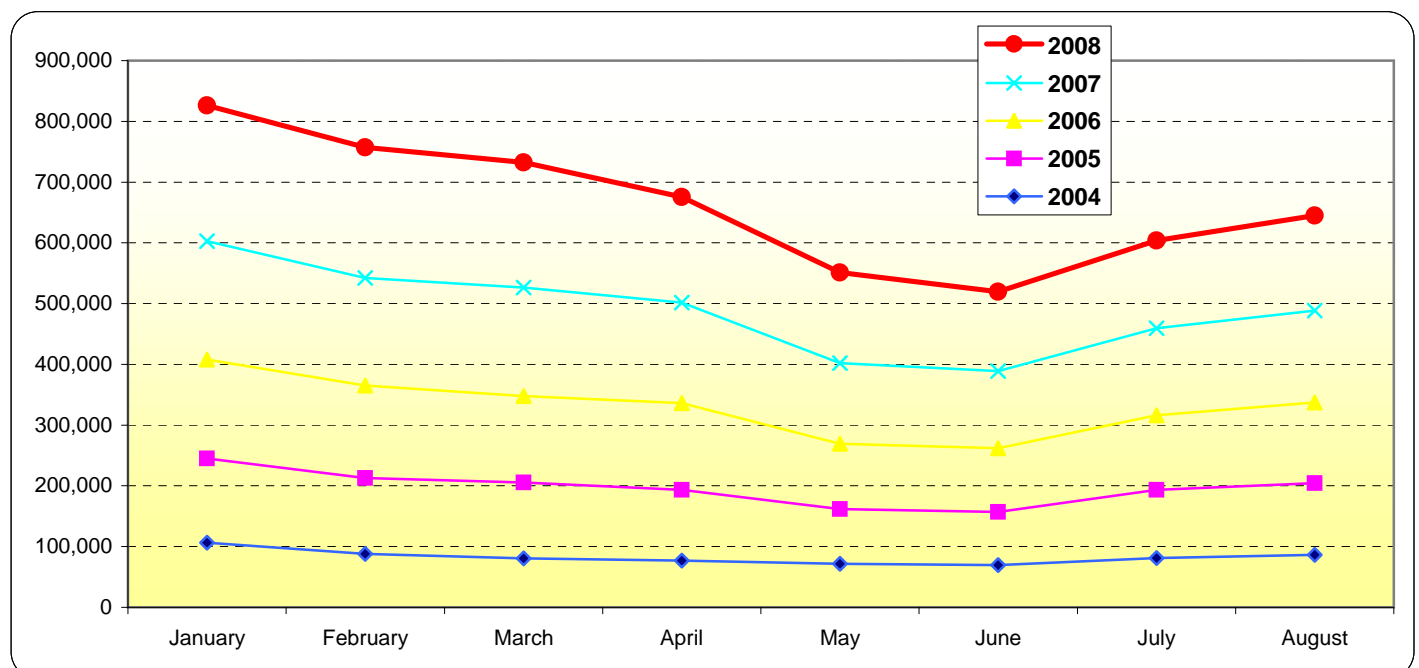
## Tourism Highlights

### Visitor Arrivals, Average Length of Stay, Hotels Occupancy and Tourism Receipts 1993 - 2007

Years	Visitor Arrivals		Average Length of Stay (days)	Hotels Occupancy (%)	Tourism Receipts (million US\$)
	number	change (%)			
1993	118,183	0.00	N/A	N/A	N/A
1994	176,617	49.44%	N/A	N/A	N/A
1995	219,680	24.38%	8.00	37.00	100
1996	260,489	18.58%	7.50	40.00	118
1997	218,843	-15.99%	6.40	30.00	103
1998	289,524	32.30%	5.20	40.00	166
1999	367,743	27.02%	5.50	44.00	190
2000	466,365	26.82%	5.50	45.00	228
2001	604,919	29.71%	5.50	48.00	304
2002	786,524	30.02%	5.80	50.00	379
2003	701,014	-10.87%	5.50	50.00	347
2004	1,055,202	50.53%	6.30	52.00	578
2005	1,421,615	34.72%	6.30	52.00	832
2006	1,700,041	19.59%	6.50	54.79	1,049
2007	2,015,128	18.53%	6.50	54.79	1,400
2008 (Jan-Aug)	1,402,783	10.44%	-	-	-

### International visitor arrivals to Cambodia

Destination	Months	2004	2005	2006	2007	2008	change(%) 2008*/07
<b>Cambodia</b>	January	106,200	138,718	163,047	194,932	223,581	14.70%
<i>(all means of transportation, include same-day visitors)</i>	February	87,795	125,326	151,821	177,130	214,902	21.32%
	March	80,765	124,626	142,437	178,751	205,722	15.09%
	April	77,105	116,219	143,069	165,347	173,903	5.17%
	May	71,486	90,314	107,720	132,512	149,275	12.65%
	June	69,595	87,228	105,298	126,677	130,853	3.30%
	July	81,223	112,116	123,047	143,310	148,449	3.59%
	August	86,450	117,943	132,792	151,478	156,098	3.05%
	September	71,209	93,158	114,781	137,027		
	October	86,121	116,382	138,296	160,235		
	November	113,195	138,293	163,068	194,646		
	December	124,058	161,292	214,665	253,083		
	<b>Total</b>	<b>1,055,202</b>	<b>1,421,615</b>	<b>1,700,041</b>	<b>2,015,128</b>	<b>1,402,783</b>	<b>10.44%</b>



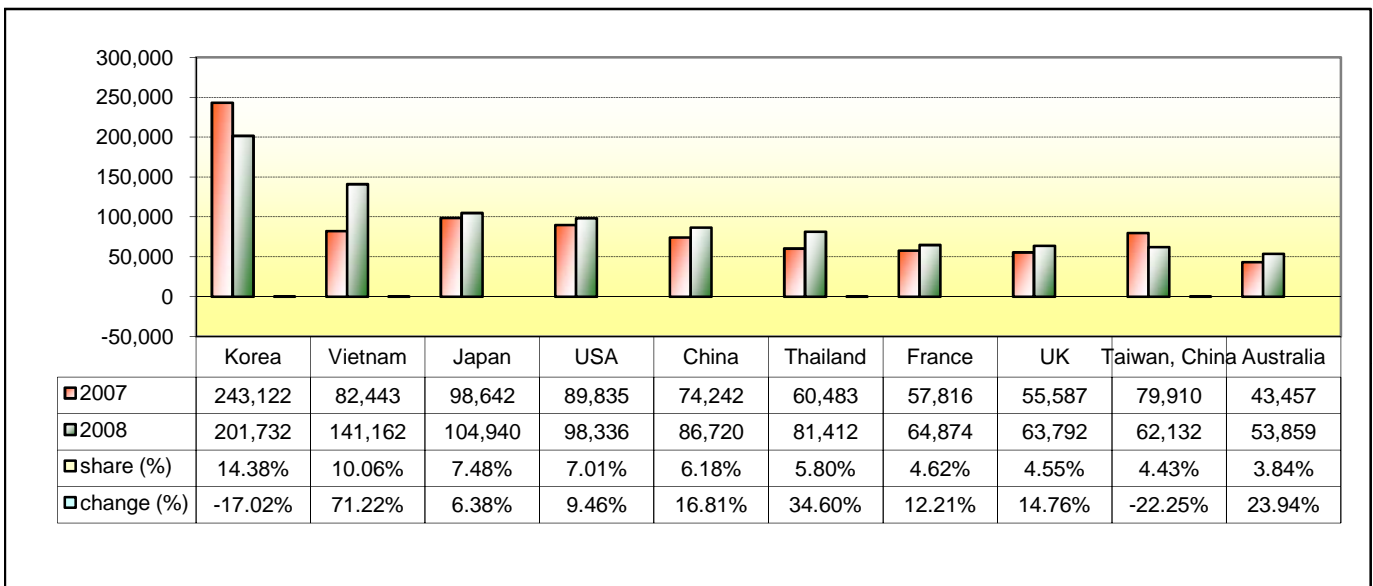
## Executive Summary from January - August in 2008

I. Visitor arrivals to Cambodia from Jan - Aug was: **1,402,783**

### II Mode of arrivals

	visitors	share (%)
<b>- Air</b>	<b>840,474</b>	<b>59.91</b>
Phnom Penh Int'l Airport	382,377	27.26
Siem Reap Int'l Airport	458,097	32.66
<b>- Land and Water ways</b>	<b>513,939</b>	<b>36.64</b>
Land	466,939	33.29
Boat	47,000	3.35
- Same-day visitors	48,370	3.45
<b>Total</b>	<b>1,402,783</b>	<b>100.00</b>

### III. Top ten markets arrivals to Cambodia from Jan - Aug in 2008



### IV. Visitor arrivals to Cambodia from Jan - Aug 2007 - 2008

Visitor arrivals	2007		2008		share (%)		change (%)
	2007	2008	2007	2008*	2007	2008*	2008*/07
<b>Air</b>	<b>841,963</b>	<b>840,474</b>	<b>66.29</b>	<b>59.91</b>	<b>66.29</b>	<b>59.91</b>	<b>-0.18</b>
Phnom Penh Int'l Airport	342,709	382,377	26.98	27.26	26.98	27.26	11.57
Siem Reap Int'l Airport	499,254	458,097	39.31	32.66	39.31	32.66	-8.24
<b>Land and Water ways</b>	<b>374,938</b>	<b>513,939</b>	<b>29.52</b>	<b>36.64</b>	<b>29.52</b>	<b>36.64</b>	<b>37.07</b>
Land	347,838	466,939	27.39	33.29	27.39	33.29	34.24
Boat	27,100	47,000	2.13	3.35	2.13	3.35	73.43
<b>Sub-Total</b>	<b>1,216,901</b>	<b>1,354,413</b>	<b>95.81</b>	<b>96.55</b>	<b>95.81</b>	<b>96.55</b>	<b>11.30</b>
Same-day visitors	53,236	48,370	4.19	3.45	4.19	3.45	-9.14
<b>Total</b>	<b>1,270,137</b>	<b>1,402,783</b>	<b>100.00</b>	<b>100.00</b>	<b>100.00</b>	<b>100.00</b>	<b>10.44</b>

### V. Remark: Percentage share of visitor arrivals at destination from Jan - Aug 2008

Visitor arrivals	2007		2008		share (%)		change (%)
	2007	2008	2007	2008*	2007	2008*	2008*/07
Phnom Penh & Other Destinations	522,519	679,839	41.14%	48.46%	41.14%	48.46%	30.11%
Siem Reap Province	747,618	722,944	58.86%	51.54%	58.86%	51.54%	-3.30%
<b>Total</b>	<b>1,270,137</b>	<b>1,402,783</b>	<b>100.00%</b>	<b>100.00%</b>	<b>100.00%</b>	<b>100.00%</b>	<b>10.44%</b>

## Visitor Arrivals to Cambodia by Country of Residence in January - August 2008

(by all means of transportation)

Regions Country of Residence	2007	2008			Total	Females	share (%) 2008*	change (%) 2008*/07
		Purpose of Visit						
		Holiday	Business	Others				
<b>GRAND TOTAL</b>	<b>1,270,137</b>	<b>1,222,231</b>	<b>109,119</b>	<b>23,063</b>	<b>1,402,783</b>	<b>610,820</b>	<b>100.00%</b>	<b>10.44%</b>
<b>Asia and the Pacific</b>	<b>824,849</b>	<b>802,919</b>	<b>91,509</b>	<b>12,558</b>	<b>906,986</b>	<b>411,724</b>	<b>64.66%</b>	<b>9.96%</b>
<b>ASEAN</b>	<b>257,500</b>	<b>317,102</b>	<b>42,352</b>	<b>6,739</b>	<b>366,193</b>	<b>169,675</b>	<b>26.10%</b>	<b>42.21%</b>
Brunei Darussalam	264	185	8	40	233	99	0.02%	-11.74%
Indonesia	5,155	3,538	2,253	231	6,022	2,173	0.43%	16.82%
Laos	12,295	33,326	83	268	33,677	21,946	2.40%	173.91%
Malaysia	54,466	48,655	3,257	173	52,085	17,974	3.71%	-4.37%
Myanmar	1,220	1,207	292	98	1,597	622	0.11%	30.90%
Philippines	18,836	21,369	3,130	693	25,192	14,634	1.80%	33.74%
Singapore	22,338	23,364	1,335	114	24,813	8,722	1.77%	11.08%
Thailand	60,483	70,134	9,512	1,766	81,412	31,166	5.80%	34.60%
Vietnam	82,443	115,324	22,482	3,356	141,162	72,339	10.06%	71.22%
<b>Eastern Asia</b>	<b>497,760</b>	<b>411,632</b>	<b>42,534</b>	<b>3,570</b>	<b>457,736</b>	<b>211,620</b>	<b>32.63%</b>	<b>-8.04%</b>
China	74,242	62,994	23,048	678	86,720	36,582	6.18%	16.81%
Hong Kong, China	1,729	1,803	326	0	2,129	753	0.15%	23.13%
Japan	98,642	99,941	3,279	1,720	104,940	50,657	7.48%	6.38%
Mongolia	115	69	6	8	83	46	0.01%	-27.83%
South Korea	243,122	190,251	10,358	1,123	201,732	95,342	14.38%	-17.02%
Taiwan, China	79,910	56,574	5,517	41	62,132	28,240	4.43%	-22.25%
<b>Southern Asia</b>	<b>8,663</b>	<b>7,284</b>	<b>2,445</b>	<b>657</b>	<b>10,386</b>	<b>2,464</b>	<b>0.74%</b>	<b>19.89%</b>
Afghanistan	20	9	0	14	23	6	0.00%	15.00%
Bangladesh	448	249	151	70	470	74	0.03%	4.91%
India	6,948	6,073	1,951	372	8,396	2,033	0.60%	20.84%
Nepal	430	426	128	60	614	151	0.04%	42.79%
Pakistan	361	253	70	80	403	51	0.03%	11.63%
Sri Lanka	456	274	145	61	480	149	0.03%	5.26%
<b>Oceania</b>	<b>50,968</b>	<b>57,380</b>	<b>3,785</b>	<b>1,477</b>	<b>62,642</b>	<b>27,107</b>	<b>4.47%</b>	<b>22.90%</b>
Australia	43,457	49,368	3,226	1,265	53,859	23,524	3.84%	23.94%
New Zealand	7,511	8,012	559	212	8,783	3,583	0.63%	16.94%
Others Asia & the Pacific	9,958	9,521	393	115	10,029	858	0.71%	0.71%
<b>Europe</b>	<b>259,262</b>	<b>283,774</b>	<b>11,070</b>	<b>6,379</b>	<b>301,223</b>	<b>118,937</b>	<b>21.47%</b>	<b>16.18%</b>
<b>Northern Europe</b>	<b>87,613</b>	<b>95,362</b>	<b>3,984</b>	<b>1,906</b>	<b>101,252</b>	<b>38,437</b>	<b>7.22%</b>	<b>15.57%</b>
Denmark	5,596	5,943	163	168	6,274	2,472	0.45%	12.12%
Finland	3,354	4,039	152	154	4,345	1,524	0.31%	29.55%
Iceland	140	175	2	0	177	61	0.01%	26.43%
Ireland	6,655	7,324	197	116	7,637	3,288	0.54%	14.76%
Norway	4,289	5,198	162	76	5,436	2,068	0.39%	26.74%
Sweden	11,992	12,997	344	250	13,591	5,651	0.97%	13.33%
United Kingdom	55,587	59,686	2,964	1,142	63,792	23,373	4.55%	14.76%
<b>Western Europe</b>	<b>122,915</b>	<b>131,087</b>	<b>5,686</b>	<b>3,578</b>	<b>140,351</b>	<b>57,628</b>	<b>10.01%</b>	<b>14.19%</b>
Austria	4,426	4,761	57	35	4,853	1,999	0.35%	9.65%
Belgium	7,165	7,681	326	321	8,328	3,277	0.59%	16.23%
France	57,816	59,357	3,577	1,940	64,874	27,420	4.62%	12.21%
Germany	31,993	36,496	898	766	38,160	15,154	2.72%	19.28%
Luxembourg	226	322	4	13	339	135	0.02%	50.00%
Netherlands	13,177	13,809	497	304	14,610	5,972	1.04%	10.88%
Switzerland	8,112	8,661	327	199	9,187	3,671	0.65%	13.25%
<b>Eastern Europe</b>	<b>12,273</b>	<b>18,299</b>	<b>478</b>	<b>272</b>	<b>19,049</b>	<b>8,887</b>	<b>1.36%</b>	<b>55.21%</b>
Bulgaria	163	198	9	9	216	87	0.02%	32.52%
Czech	1,140	1,345	19	44	1,408	562	0.10%	23.51%
Hungary	1,578	1,554	43	29	1,626	723	0.12%	3.04%
Poland	2,214	3,270	31	37	3,338	1,592	0.24%	50.77%
Romania	221	249	18	9	276	155	0.02%	24.89%
Russia	5,766	10,214	293	108	10,615	5,059	0.76%	84.10%
Slovakia	269	405	14	28	447	193	0.03%	66.17%
Ukraine	922	1,064	51	8	1,123	516	0.08%	21.80%
<b>Southern Europe</b>	<b>26,711</b>	<b>29,867</b>	<b>567</b>	<b>529</b>	<b>30,963</b>	<b>13,202</b>	<b>2.21%</b>	<b>15.92%</b>
Croatia	131	225	4	17	246	108	0.02%	87.79%
Greece	932	921	14	14	949	370	0.07%	1.82%
Italy	12,354	13,567	229	215	14,011	5,403	1.00%	13.41%
Portugal	1,562	1,536	45	31	1,612	759	0.11%	3.20%
Slovenia	362	528	9	4	541	243	0.04%	49.45%
Spain	10,425	12,050	169	170	12,389	5,924	0.88%	18.84%
Turkey	945	1,040	97	78	1,215	395	0.09%	28.57%
Others Europe	9,750	9,159	355	94	9,608	783	0.68%	-1.46%

## Visitor Arrivals to Cambodia by Country of Residence in January - August 2008

(by all means of transportation)

Regions Country of Residence	2007	2008			Total	Females	share	change
		Purpose of Visit					(%)	(%)
		Holiday	Business	Others			2008*	2008*/07
<b>GRAND TOTAL</b>	<b>1,270,137</b>	<b>1,222,231</b>	<b>109,119</b>	<b>23,063</b>	<b>1,402,783</b>	<b>610,820</b>	<b>100.00%</b>	<b>10.44%</b>
<b>Americas</b>	<b>125,316</b>	<b>128,925</b>	<b>6,134</b>	<b>3,966</b>	<b>139,025</b>	<b>56,550</b>	<b>9.91%</b>	<b>10.94%</b>
Argentina	744	1,053	23	18	1,094	491	0.08%	47.04%
Brazil	921	1,178	22	43	1,243	591	0.09%	34.96%
Canada	22,177	23,803	1,066	575	25,444	11,163	1.81%	14.73%
Chile	795	1,099	17	14	1,130	571	0.08%	42.14%
Colombia	369	458	2	34	494	221	0.04%	33.88%
Mexico	2,193	2,128	29	14	2,171	1,058	0.15%	-1.00%
Peru	206	207	2	14	223	111	0.02%	8.25%
United States	89,835	90,407	4,748	3,181	98,336	41,623	7.01%	9.46%
Uruguay	252	130	3	1	134	85	0.01%	-46.83%
Others Americas	7,824	8,462	222	72	8,756	636	0.62%	11.91%
<b>Africa</b>	<b>2,178</b>	<b>2,059</b>	<b>292</b>	<b>80</b>	<b>2,431</b>	<b>752</b>	<b>0.17%</b>	<b>11.62%</b>
Cameroon	89	152	14	3	169	41	0.01%	89.89%
Ghana	130	54	11	3	68	17	0.00%	-47.69%
Nigeria	393	471	138	18	627	40	0.04%	59.54%
Sudan	5	15	6	3	24	6	0.00%	380.00%
South Africa	1,152	1,230	107	20	1,357	576	0.10%	17.80%
Others Africa	409	137	16	33	186	72	0.01%	-54.52%
<b>Middle East</b>	<b>5,296</b>	<b>4,554</b>	<b>114</b>	<b>80</b>	<b>4,748</b>	<b>1,665</b>	<b>0.34%</b>	<b>-10.35%</b>
Egypt	59	84	3	5	92	22	0.01%	55.93%
Iran	262	138	7	8	153	35	0.01%	-41.60%
Israel	4,191	3,848	94	36	3,978	1,550	0.28%	-5.08%
Kuwait	337	343	0	7	350	11	0.02%	3.86%
Palestine	0				0		0.00%	
Saudi Arabia	69	32	2	0	34	0	0.00%	-50.72%
United Arab Emirates	0				0		0.00%	
Others Middle East	378	109	8	24	141	47	0.01%	-62.70%
Same-day visitors	53,236				48,370	21,192	3.45%	-9.14%

### Remark:

- Cambodian Overseas: 61,719
- Cambodian Residence: 875,841

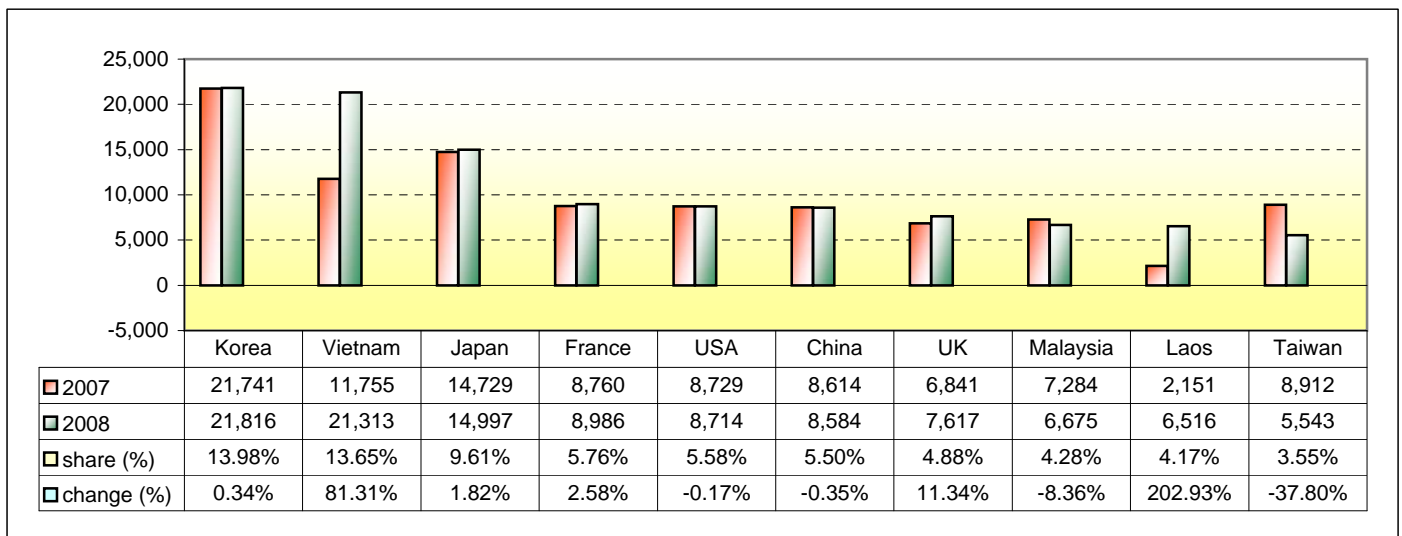
## Executive Summary in August 2008

I. Visitor arrivals to Cambodia in August was: **156,098**

### II. Mode of arrivals

	visitors	share (%)
<b>- Air</b>	<b>93,184</b>	<b>59.70</b>
Phnom Penh Int'l Airport	45,492	29.14
Siem Reap Int'l Airport	47,692	30.55
<b>- Land and Water ways</b>	<b>61,292</b>	<b>39.27</b>
Land	56,637	36.28
Boat	4,655	2.98
- Same-day visitors	1,622	1.04
<b>Total</b>	<b>156,098</b>	<b>100.00</b>

### III. Top ten markets arrivals to Cambodia in August 2008



### IV. Visitor arrivals to Cambodia in August 2007 - 2008

Visitor arrivals			share (%)		change (%)
	2007	2008	2007	2008*	2008*/07
<b>Air</b>	<b>98,746</b>	<b>93,184</b>	<b>65.19</b>	<b>59.70</b>	<b>-5.63</b>
Phnom Penh Int'l Airport	41,534	45,492	27.42	29.14	9.53
Siem Reap Int'l Airport	57,212	47,692	37.77	30.55	-16.64
<b>Land and Water ways</b>	<b>45,537</b>	<b>61,292</b>	<b>30.06</b>	<b>39.27</b>	<b>34.60</b>
Land	42,121	56,637	27.81	36.28	34.46
Boat	3,416	4,655	2.26	2.98	36.27
<b>Sub-Total</b>	<b>144,283</b>	<b>154,476</b>	<b>95.25</b>	<b>98.96</b>	<b>7.06</b>
Same-day visitors	7,195	1,622	4.75	1.04	-77.46
<b>Total</b>	<b>151,478</b>	<b>156,098</b>	<b>100.00</b>	<b>100.00</b>	<b>3.05</b>

### V. Remark: Percentage share of visitor arrivals at destination in August 2008

Visitor arrivals			share (%)		change (%)
	2007	2008	2007	2008*	2008*/07
Phnom Penh & Other Destinations	82,282	77,844	54.32%	49.87%	-5.39%
Siem Reap Province	69,196	78,254	45.68%	50.13%	13.09%
<b>Total</b>	<b>151,478</b>	<b>156,098</b>	<b>100.00%</b>	<b>100.00%</b>	<b>3.05%</b>

## Visitor Arrivals to Cambodia by Country of Residence in August 2008

(by all means of transportation)

Regions Country of Residence	2007	2008			Total	Females	share	change
		Purpose of Visit					(%)	(%)
		Holiday	Business	Others			2008*	2008*/07
<b>GRAND TOTAL</b>	<b>151,478</b>	<b>138,448</b>	<b>13,069</b>	<b>2,959</b>	<b>156,098</b>	<b>67,058</b>	<b>100.00%</b>	<b>3.05%</b>
<b>Asia and the Pacific</b>	<b>96,540</b>	<b>93,576</b>	<b>10,884</b>	<b>1,533</b>	<b>105,993</b>	<b>47,157</b>	<b>67.90%</b>	<b>9.79%</b>
<b>ASEAN</b>	<b>34,584</b>	<b>41,369</b>	<b>5,118</b>	<b>770</b>	<b>47,257</b>	<b>21,272</b>	<b>30.27%</b>	<b>36.64%</b>
Brunei Darussalam	60	30	1	8	39	16	0.02%	-35.00%
Indonesia	799	325	250	30	605	209	0.39%	-24.28%
Laos	2,151	6,460	16	40	6,516	4,173	4.17%	202.93%
Malaysia	7,284	6,211	440	24	6,675	2,414	4.28%	-8.36%
Myanmar	112	222	42	15	279	86	0.18%	149.11%
Philippines	2,487	2,710	388	98	3,196	1,838	2.05%	28.51%
Singapore	2,691	2,939	188	11	3,138	1,049	2.01%	16.61%
Thailand	7,245	4,038	1,241	217	5,496	2,005	3.52%	-24.14%
Vietnam	11,755	18,434	2,552	327	21,313	9,482	13.65%	81.31%
<b>Eastern Asia</b>	<b>54,202</b>	<b>45,802</b>	<b>4,897</b>	<b>478</b>	<b>51,177</b>	<b>23,271</b>	<b>32.79%</b>	<b>-5.58%</b>
China	8,614	5,917	2,606	61	8,584	3,464	5.50%	-0.35%
Hong Kong, China	184	169	61	0	230	60	0.15%	25.00%
Japan	14,729	14,334	388	275	14,997	7,483	9.61%	1.82%
Mongolia	22	7	0	0	7	4	0.00%	-68.18%
South Korea	21,741	20,489	1,190	137	21,816	10,126	13.98%	0.34%
Taiwan, China	8,912	4,886	652	5	5,543	2,134	3.55%	-37.80%
<b>Southern Asia</b>	<b>1,268</b>	<b>852</b>	<b>420</b>	<b>109</b>	<b>1,381</b>	<b>262</b>	<b>0.88%</b>	<b>8.91%</b>
Afghanistan	3	0	0	1	1	1	0.00%	-66.67%
Bangladesh	78	43	24	26	93	15	0.06%	19.23%
India	1,011	692	350	46	1,088	208	0.70%	7.62%
Nepal	45	35	17	10	62	17	0.04%	37.78%
Pakistan	70	33	7	5	45	5	0.03%	-35.71%
Sri Lanka	61	49	22	21	92	16	0.06%	50.82%
<b>Oceania</b>	<b>5,156</b>	<b>5,188</b>	<b>424</b>	<b>162</b>	<b>5,774</b>	<b>2,304</b>	<b>3.70%</b>	<b>11.99%</b>
Australia	4,309	4,267	347	130	4,744	1,908	3.04%	10.10%
New Zealand	847	921	77	32	1,030	396	0.66%	21.61%
Others Asia & the Pacific	1,330	365	25	14	404	48	0.26%	-69.62%
<b>Europe</b>	<b>34,714</b>	<b>33,940</b>	<b>1,397</b>	<b>934</b>	<b>36,271</b>	<b>14,998</b>	<b>23.24%</b>	<b>4.49%</b>
<b>Northern Europe</b>	<b>9,239</b>	<b>9,256</b>	<b>448</b>	<b>266</b>	<b>9,970</b>	<b>3,849</b>	<b>6.39%</b>	<b>7.91%</b>
Denmark	365	345	21	24	390	148	0.25%	6.85%
Finland	194	170	7	17	194	50	0.12%	0.00%
Iceland	7	11	0	0	11	5	0.01%	57.14%
Ireland	1,143	1,078	24	23	1,125	539	0.72%	-1.57%
Norway	222	212	18	7	237	67	0.15%	6.76%
Sweden	467	337	31	28	396	125	0.25%	-15.20%
United Kingdom	6,841	7,103	347	167	7,617	2,915	4.88%	11.34%
<b>Western Europe</b>	<b>15,388</b>	<b>14,750</b>	<b>787</b>	<b>541</b>	<b>16,078</b>	<b>6,571</b>	<b>10.30%</b>	<b>4.48%</b>
Austria	398	405	8	3	416	166	0.27%	4.52%
Belgium	790	827	31	40	898	349	0.58%	13.67%
France	8,760	8,120	517	349	8,986	3,720	5.76%	2.58%
Germany	2,879	2,785	117	84	2,986	1,166	1.91%	3.72%
Luxembourg	42	73	0	2	75	34	0.05%	78.57%
Netherlands	1,881	1,956	62	35	2,053	873	1.32%	9.14%
Switzerland	638	584	52	28	664	263	0.43%	4.08%
<b>Eastern Europe</b>	<b>999</b>	<b>1,466</b>	<b>51</b>	<b>46</b>	<b>1,563</b>	<b>736</b>	<b>1.00%</b>	<b>56.46%</b>
Bulgaria	9	8	2	2	12	5	0.01%	33.33%
Czech	66	72	1	1	74	25	0.05%	12.12%
Hungary	100	87	3	0	90	34	0.06%	-10.00%
Poland	204	284	3	5	292	132	0.19%	43.14%
Romania	12	25	5	0	30	17	0.02%	150.00%
Russia	481	849	31	35	915	450	0.59%	90.23%
Slovakia	23	44	1	3	48	24	0.03%	108.70%
Ukraine	104	97	5	0	102	49	0.07%	-1.92%
<b>Southern Europe</b>	<b>7,768</b>	<b>8,168</b>	<b>89</b>	<b>69</b>	<b>8,326</b>	<b>3,802</b>	<b>5.33%</b>	<b>7.18%</b>
Croatia	19	16	1	1	18	7	0.01%	-5.26%
Greece	255	199	1	0	200	81	0.13%	-21.57%
Italy	2,944	2,834	32	39	2,905	1,182	1.86%	-1.32%
Portugal	477	382	1	3	386	186	0.25%	-19.08%
Slovenia	19	42	2	0	44	22	0.03%	131.58%
Spain	3,960	4,612	25	21	4,658	2,298	2.98%	17.63%
Turkey	94	83	27	5	115	26	0.07%	22.34%
Others Europe	1,320	300	22	12	334	40	0.21%	-74.70%

## Visitor Arrivals to Cambodia by Country of Residence in August 2008

(by all means of transportation)

Regions Country of Residence	2007	2008			Total	Females	share	change
		Purpose of Visit					(%)	(%)
		Holiday	Business	Others			2008*	2008*/07
<b>GRAND TOTAL</b>	<b>151,478</b>	<b>138,448</b>	<b>13,069</b>	<b>2,959</b>	<b>156,098</b>	<b>67,058</b>	<b>100.00%</b>	<b>3.05%</b>
<b>Americas</b>	<b>12,242</b>	<b>10,242</b>	<b>739</b>	<b>471</b>	<b>11,452</b>	<b>4,544</b>	<b>7.34%</b>	<b>-6.45%</b>
Argentina	72	50	0	4	54	24	0.03%	-25.00%
Brazil	80	84	2	5	91	42	0.06%	13.75%
Canada	1,806	1,860	156	55	2,071	865	1.33%	14.67%
Chile	46	67	1	1	69	29	0.04%	50.00%
Colombia	43	51	1	4	56	29	0.04%	30.23%
Mexico	153	129	0	0	129	59	0.08%	-15.69%
Peru	25	31	0	0	31	17	0.02%	24.00%
United States	8,729	7,751	569	394	8,714	3,438	5.58%	-0.17%
Uruguay	4	9	0	0	9	8	0.01%	125.00%
Others Americas	1,284	210	10	8	228	33	0.15%	-82.24%
<b>Africa</b>	<b>184</b>	<b>261</b>	<b>34</b>	<b>14</b>	<b>309</b>	<b>110</b>	<b>0.20%</b>	<b>67.93%</b>
Cameroon	5	12	1	0	13	1	0.01%	160.00%
Ghana	8	11	2	1	14	5	0.01%	75.00%
Nigeria	33	46	20	3	69	4	0.04%	109.09%
Sudan	1	2	0	0	2	1	0.00%	100.00%
South Africa	113	174	11	5	190	93	0.12%	68.14%
Others Africa	24	16	0	5	21	6	0.01%	-12.50%
<b>Middle East</b>	<b>603</b>	<b>429</b>	<b>15</b>	<b>7</b>	<b>451</b>	<b>119</b>	<b>0.29%</b>	<b>-25.21%</b>
Egypt	6	14	1	1	16	4	0.01%	166.67%
Iran	44	24	0	2	26	2	0.02%	-40.91%
Israel	394	296	14	1	311	103	0.20%	-21.07%
Kuwait	140	79	0	0	79	6	0.05%	-43.57%
Palestine	0				0		0.00%	
Saudi Arabia	3	3	0	0	3	0	0.00%	0.00%
United Arab Emirates	0				0		0.00%	
Others Middle East	16	13	0	3	16	4	0.01%	0.00%
Same-day visitors	<b>7,195</b>				<b>1,622</b>	<b>130</b>	<b>1.04%</b>	<b>-77.46%</b>

Remark:

- Cambodian Overseas: 13,069
- Cambodian Residence: 19,214

**COMPILED BY:**

1. Mr. Kong Sopheareak

Director  
Statistics & Tourism Information Department  
Tel.: +855 23 211593  
E-mail: kong@mot.gov.kh

2. Mr. Horth Vanny

Chief of Tourism Statistics Office  
Compile and data analysis  
Tel.: +855 12 827664